

Lions Clubs International

MD 105 British Isles & Ireland **We Serve**

Lions Clubs International
MD 105 British Isles and Ireland
10th March 2017



To: All Club Secretaries, MD105

CC: District Governors, Vice District Governors, District Secretaries,
MD Officers PDG Mike Davis (MD105 Deputy Credentials and Elections Officer)

MD Convention Blackpool April 22nd–23rd 2017

Attached are full details of all proposed Resolutions, together with their explanatory notes, accepted for debate at MD Convention in Blackpool. There were no constitutionally acceptable amendments proposed to the resolutions circulated on February 3rd 2017.

Please ensure that these proposed Resolutions are placed before all of your Club members for consideration and instruction to your Club Delegates who will be participating in debate and voting at the abovementioned Convention.

Proposers of Resolutions are asked to make their way to seats reserved for speakers, which will be situated close to the rostrum, so that they can approach the rostrum and be ready to speak as soon as they are called.

Please be aware that the Secunder of a Resolution will **NOT** be called to the rostrum. I will announce their name and Club and they will be expected to indicate their presence in the Convention Hall by standing. The Secunder may speak in debate, by proceeding to one of the microphones located on the floor of Convention and catching the Chairman's eye.

Also, in accordance with Convention Standing Orders, the Resolutions and Amendments will NOT be formally read into the record. Their content will however, be displayed on the screen(s) in the Convention Hall.

Council intend to take resolutions 1 - 7 and 9 en bloc to save time for debate on other matters, should any delegate wish to debate any of these resolutions independently, they are requested to inform the Council Chair or the MD CNRO in advance. The Council chair will offer this opportunity again immediately before the debate. Any delegate wishing to do so and who has not previously informed the Council Chair or the MD CNRO will need to make it known to Convention at that time. (Resolution 8 has been removed from the bloc as one club has indicated a desire to debate that resolution individually.)

If there are any issues arising from this note or on the procedure for the presentation of Resolutions at Convention, please do not hesitate to contact me at cnro@lionsclubs.co or on 0845 833 7898 as it is preferable to resolve such issues **prior to Convention** itself.

Yours in Lionism

Trevor Kell

Lion Trevor Kell
MD105 Constitutions, Nominations and Resolutions Officer
2016-2017

Resolutions 1-17

Resolution	Resolution content	Page
1-Council	<p>Interpretation to the MD Constitution</p> <p><i>Insert the words 'and Districts' after the words 'communicated forthwith to all Clubs'</i></p> <p><i>Delete the words 'while the Council remains in office' in the second to last sentence, and the word 'meanwhile' in the same sentence.</i></p>	5
2-Council	<p>Interpretation to the MD Constitution by adding definitions of the words 'in writing; and 'meeting':</p>	6
3-Council	<p>To amend Article II, Section 4 of the Multiple District Constitution as follows</p> <p><i>Add the words 'At least two meetings annually to be face to face meetings'</i></p>	7
4-Council	<p>To amend Article II, Section 5 of the Multiple District Constitution as follows:</p> <p><i>Insert the words 'or participating' after the words 'in person'</i></p>	8
5-Council	<p>To amend Article IV, Section 3 of the Multiple District Constitution as follows:</p> <p>Insert the words 'directly in writing' after the words 'all Clubs and Districts' in the first sentence.</p>	9
6-Council	<p>Article IV, Section 6 of the Multiple District Constitution as follows:</p> <p><i>Insert the words 'from Clubs or Districts' after the words 'All resolutions' in the first sentence</i></p> <p><i>Delete the word 'reach' and replace with the words 'be received by' after the words 'in writing to' in the first sentence.</i></p> <p><i>Delete the words in the first sentence 'at the address and by the date specified' and replace with the words 'on or before the date, and at the address specified'</i></p>	10
7-Council	<p>To amend Article IV, Section 7 of the Multiple District Constitution as follows:</p> <p><i>In sub-section (a)</i></p> <p><i>Insert the word 'constitutional' before the word 'acceptability' in the first line.</i></p> <p><i>Insert the words 'from a Club or District' after the word resolution in the first line.</i></p> <p><i>Insert the words 'Such period of liaison shall take place prior to the final date for acceptance of those resolutions as stated in the Convention Call' after the words 'presented for debate'</i></p>	11
8-Council	<p>To amend Article V, Section 1 of the Multiple District Constitution as follows:</p> <p><i>Delete the word 'sent' and replace with the words 'made available in writing'</i></p>	12
9-Council	<p>To amend Article VI, Section 2 of the Multiple District Constitution as follows:</p> <p><i>In sub-section (a)</i></p> <p><i>Insert the words 'may only be' after the words 'The By-Laws to this Constitution'</i></p>	13

10-Council	To insert a new Article into the Multiple District Constitution as follows: ARTICLE IX – MULTIPLE DISTRICT DISPUTE RESOLUTION PROCEDURE	14
11-Council	This Convention resolves to delete Standing Order number 11 of the Multiple District Convention Standing Orders	15
12-Council	This Convention Resolves that the Multiple District Per Capita Levy for the Fiscal Year 2017/2018 shall continue to be £28.50p per Lion, payable in two equal instalments, the first in August 2017 based on membership as at 30 June 2017 and the second in February 2018 based on membership as at 31 December 2017.	16
13-Council	Concerning the LCI Joining Fee This Convention resolves to ask the International Board to consider reversing the increase in the Joining Fee for new members to stimulate recruitment in our Centennial Year; and to ask the International Board to look instead to implement savings, such as the use of email rather than surface mail or courier delivery for communications from The International Board, and the placing of internal directories on the LCI website rather than producing print copies.	19
14-Council	Concerning the Redistricting of MD 105 This Convention resolves that the Council of Governors shall take all necessary steps as required by The International Board of Directors to redistrict Multiple District 105 to reduce the number of 12 sub-districts to 8 sub-districts to take effect on 1st July 2019. A list of clubs to be allocated to the proposed sub-districts and a map showing the boundaries that the new sub-districts will follow are shown at appendix 1.	20
15-Proposed by District C and seconded by District E	This convention resolves to merge the current districts 105C and 105E to form one consolidated district	29
16-District BN	Concerning the Peace Poster Competition This Convention instructs the Council of Governors to ask the International Board of Directors of Lions Clubs International to consider amending the rules of the Peace Poster Competition to allow International paper size A3 (29.7cm x 42cm - 11.7" x 16.5") as well as/instead of the current size range (13" x 20" - 33cm x 50.8cm to 20" x 24" - 50.8cm x 61.0cm). This latter range has no American Standard (ANSI) designation.	31
17-Proposed by Alton LC Seconded by Meon Valley Lions Club	Concerning an amendment to the MD Constitution	32
Appendix 1	Supporting documents for resolution 14 –Redistricting of MD105	33-73

Resolution 1

Proposed by Council

Concerning an amendment to the MD Constitution

To amend Section 1 of the Interpretation to the MD Constitution as follows:

1. *Insert the words 'and Districts' after the words 'communicated forthwith to all Clubs'*
2. *Delete the words 'while the Council remains in office' in the second to last sentence, and the word 'meanwhile' in the same sentence.*

To read:

This Constitution shall be read, construed and operated in the general context and spirit of the Constitution and By-laws of Lions Clubs International, and shall be binding upon the whole of the membership. All differences and disputes arising from, incidental to, or consequent upon any ambiguities or uncertainties herein, or omissions here-from, or otherwise concerning matters dealt with in this Constitution shall be dealt with by the Council. Any such decision shall take immediate effect, shall be communicated forthwith to all Clubs **and Districts** in the Multiple District and thereupon shall be binding on all concerned. Any such decision shall stand and have full force and effect ~~while the Council remains in office~~ unless ~~meanwhile~~ constitutionally amended at a Multiple District Convention. If any such decision shall be so amended any interim acts, deeds or omissions consequent upon such decision shall be deemed nevertheless to have been valid and effective until constitutionally amended as aforesaid.

Explanation: these two amendments are to clarify the procedures following a decision made by council on the interpretation of one or more provisions of the MD constitution.

Constitutional Note: To be enacted, this resolution will require a two thirds majority of those delegates present at Convention who exercise their right to vote.

Resolution 2

Proposed by Council

Concerning an amendment to the MD Constitution

To amend Section 2 of the Interpretation to the MD Constitution by adding definitions of the words 'in writing; and 'meeting':

To read:

For the avoidance of doubt the following words shall have the meanings assigned to them:

<i>Words</i>	<i>Meaning</i>
Lions Clubs International	The International Association of Lions Clubs
The Multiple District	District 105 of Lions Clubs International
District	Any Sub-District forming part of the Multiple District
Year and Fiscal Year	The period from 1 July in any one year to 30 June in the following year, both dates inclusive
The Council	The Council of Governors of the Multiple District
Convention	The annual Convention of the Multiple District
Club or Clubs	A Lions Club or Clubs within the Multiple District formed within the rules of the International Association of Lions Clubs
In writing	Either hard copy, by post, or by electronic means
Meeting	Any face to face meeting or any electronic meeting in which all participants can take a full part

Explanation: These two additional definitions will remove any ambiguity as to what constitutes 'in writing' throughout the Constitution, and brings into the Constitution the ability to hold electronic meetings.

Constitutional Note: To be enacted, this resolution will require a two thirds majority of those delegates present at Convention who exercise their right to vote.

Resolution 3

Proposed by Council

Concerning an amendment to the MD Constitution

To amend Article II, Section 4 of the Multiple District Constitution as follows:

Add the words 'At least two meetings annually shall be held as face to face meetings'

To read:

The first meeting of the Council shall be held within sixty days after the date on which the District Governors officially take office. Subsequent meetings shall be held at such times and places as the Council, in session, or the Council Chairman, between sessions, may from time to time determine. Meetings of the Council shall also be held upon a request in writing from a simple majority of members of the Council. All meetings shall be convened by at least ten days' notice in writing and such convening notices shall be accompanied by an informative agenda in respect of the meeting so convened. **At least two meetings annually shall be held as face to face meetings.**

Explanation: With the introduction of electronic meetings, this will ensure that Council is actually required to hold a minimum of two face to face meetings annually (thus complying with best practice, as defined by the Charity Commission).

Constitutional Note: To be enacted, this resolution will require a two thirds majority of those delegates present at Convention who exercise their right to vote.

Resolution 4

Proposed by Council

Concerning an amendment to the MD Constitution

To amend Article II, Section 5 of the Multiple District Constitution as follows:

Insert the words 'or participating' after the words 'in person'

To read:

A simple majority of the members of Council present in person, **or participating**, shall constitute a quorum.

Explanation: This will enable electronic meetings to be considered quorate and reduce the need to revisit decisions made in electronic meetings at the next face to face meeting

Constitutional Note: To be enacted, this resolution will require a two thirds majority of those delegates present at Convention who exercise their right to vote.

Resolution 5

Proposed by Council

Concerning an amendment to the MD Constitution

To amend Article IV, Section 3 of the Multiple District Constitution as follows:

1. *Insert the words 'directly in writing' after the words 'all Clubs and Districts' in the first sentence.*
2. *Delete the words 'and such convention call shall be published in the next edition of the official journal of the Multiple District' in the same sentence.*

To read:

The Council shall issue an Official Call for Convention to all Clubs and Districts **directly in writing**, by not later than 20 August prior to the date fixed for holding the same ~~and such Official Call shall be published in the next edition of the official journal of the Multiple District.~~ The Convention Call shall incorporate the name and address of the Constitution, Nominations and Resolutions Officer and the dates for the receipt of nominations, resolutions and amendments to resolutions and for the circulation of these to Clubs within the Multiple District. The date for the final circulation of amendments to resolutions must be no later than six weeks before the opening of Convention. The Council may, at its discretion, include such other information and requirements as it considers desirable.

Explanation: The Convention Call and supporting details are sent to all clubs and are published on the MD website where any member can access them. The requirement to publish in the Lion Magazine is outdated with the advance of technology. [In a recent dispute, the Conciliators agreed that the failure to publish in the Lion magazine in 2015 did not make the Convention illegitimate, as the information was freely available to all members and no one was disadvantaged by the failure to publish.]

Constitutional Note: To be enacted, this resolution will require a two thirds majority of those delegates present at Convention who exercise their right to vote.

Resolution 6

Proposed by Council

Concerning an amendment to the MD Constitution

To amend Article IV, Section 6 of the Multiple District Constitution as follows:

1. *Insert the words 'from Clubs or Districts' after the words 'All resolutions' in the first sentence*
2. *Delete the word 'reach' and replace with the words 'be received by' after the words 'in writing to' in the first sentence.*
3. *Delete the words in the first sentence 'at the address and by the date specified' and replace with the words 'on or before the date, and at the address specified'*

To read:

All resolutions **from Clubs or Districts** shall be sent in writing to ~~reach~~ **be received by** the Constitution Nominations and Resolutions Officer ("the CNRO") ~~at the address and by the date specified~~ **on or before the date, and at the address specified** in the Convention Call (which shall not in any event be earlier than 31 December preceding the date fixed for the holding of Convention ("the Convention date")). The CNRO shall as soon as is practicable acknowledge receipt of any resolution, but it shall be the responsibility of the Club or District submitting the same to ensure its actual receipt. All resolutions and amendments by Clubs and District Cabinets must be submitted in accordance with the requirements specified in the Convention Call.

Explanation: There was a dispute regarding the submission of resolutions by Council not being submitted by the date specified. Whilst this interpretation was later shown to be incorrect, for clarity it was recommended that the ambiguity be removed. There was a late submission of a resolution last year which was posted by the date specified and proof of postage provided. This will remove any ambiguity regarding the requirement.

Constitutional Note: To be enacted, this resolution will require a two thirds majority of those delegates present at Convention who exercise their right to vote.

Resolution 7

Proposed by Council

Concerning an amendment to the MD Constitution

To amend Article IV, Section 7 of the Multiple District Constitution as follows:

In sub-section (a)

- 1. Insert the word 'constitutional' before the word 'acceptability' in the first line.*
- 2. Insert the words 'from a Club or District' after the word resolution in the first line.*
- 3. Insert the words 'Such period of liaison shall take place prior to the final date for acceptance of those resolutions as stated in the Convention Call' after the words 'presented for debate'*

To read:

- (a) In the event of any doubt arising as to the constitutional acceptability of any resolution from a Club or District, there shall be liaison between the CNRO and the proposers of the resolution with the aim of allowing the resolution to be presented for debate. Such period of liaison shall take place prior to the final date for acceptance of those resolutions as stated in the Convention Call.

Explanation: This should prevent allegations that the CNRO has not properly liaised with the proposers when resolutions are submitted so late as to make such liaison impractical.

Constitutional Note: To be enacted, this resolution will require a two thirds majority of those delegates present at Convention who exercise their right to vote.

Resolution 8

Proposed by Council

Concerning an amendment to the MD Constitution

To amend Article V, Section 1 of the Multiple District Constitution as follows:

Delete the word 'sent' and replace with the words 'made available in writing'

To read:

The official journal of the Multiple District shall be 'The Lion' (British and Irish edition) and shall be administered by a Board of Management appointed by the Council to whom the said Board of Management shall be responsible and shall be ~~sent~~ made available in writing to all Lions in 'Good Standing' in the Multiple District.

Explanation: This allows for (but does not specifically require) electronic distribution of the magazine.

Constitutional Note: To be enacted, this resolution will require a two thirds majority of those delegates present at Convention who exercise their right to vote.

Resolution 9

Proposed by Council

Concerning an amendment to the MD Constitution

To amend Article VI, Section 2 of the Multiple District Constitution as follows:

In sub-section (a) Insert the words 'may only be' after the words 'The By-Laws to this Constitution'

To read:

- ***The By-Laws to this Constitution may only be and the Standing Orders may be amended by a resolution reported by the Constitutions Nominations and Resolutions Officer to Convention and adopted by an affirmative vote of a simple majority of the registered delegates voting.***

Explanation: This will remove any ambiguity that there may be another way of amending the By-Laws

Constitutional Note: To be enacted, this resolution will require a two thirds majority of those delegates present at Convention who exercise their right to vote.

Resolution 10

Proposed by Council

Concerning an amendment to the MD Constitution

To insert a new Article into the Multiple District Constitution as follows:

ARTICLE IX – MULTIPLE DISTRICT DISPUTE RESOLUTION PROCEDURE

If a dispute arises between members, former members, Clubs or Districts about the propriety of anything done by members under the Constitution of the Multiple District and the dispute cannot be resolved by agreement, the parties to the dispute must try in good faith to settle the dispute by mediation in accordance with the relevant Lions Clubs International Dispute Resolution Procedure (as may be amended from time to time).

Explanation: This highlights the requirement for the parties to a dispute affecting the Multiple District or its Council to use the Multiple District Dispute Procedure before resorting to any other formal procedures.

Constitutional Note: To be enacted, this resolution will require a two thirds majority of those delegates present at Convention who exercise their right to vote.

Resolution 11

Proposed by Council

Concerning an amendment to the Convention Standing Orders

This Convention resolves to delete Standing Order number 11 of the Multiple District Convention Standing Orders

Explanation:

- 1. Standing Order 11 was adopted prior to the law of the land prohibiting smoking in buildings to which the public have access.*
- 2. The law of the land prohibits smoking in any Hall where Convention could be held.*
- 3. MD Constitution Article I Section 2(v) supports the law of the land as having superiority over the MD Constitution.*
- 4. This Standing Order is redundant by virtue of points 2 and 3 above and so should be removed.*

Constitutional Note: To be enacted, this resolution will require a simple majority of those delegates present at Convention who exercise their right to vote.

Resolution 12

Concerning Multiple District Dues

Proposed by Council

This Convention Resolves that the Multiple District Per Capita Levy for the Fiscal Year 2017/2018 shall continue to be £28.50p per Lion, payable in two equal instalments, the first in August 2017 based on membership as at 30 June 2017 and the second in February 2018 based on membership as at 31 December 2017.

Explanation:

The 1st July 2017 sees the most significant change to affect the Multiple District in over 30 years: the separation of District 105I to become District 133. A great deal of work has been undertaken in relation to this change and Council considered, in very great detail, the budget proposals for the Lion's year 2017-2018.

Mindful of the changes occurring over the next few years, successive Councils have looked to reduce cost by comprehensively reviewing the structure and governance of the Multiple District. These changes are being phased in and the intention is that, notwithstanding falling membership, members' dues be maintained over the expected 'change' period at their current level.

Following the success of the Community Report the M & PR budget has been maintained to allow reserves to be generated to pay for production of the next edition in 2017.

Council receive a quarterly financial analysis and the Council Treasurer undertakes quarterly meetings with Staff to review costs and expenditure, however, it should be noted that certain costs arise as a consequence of legislative requirement, Vat and Rates, for example. Of note is the Government's state aim to increase Insurance Premium Tax (IPT) to parity with Vat over coming years.

The Budget is based on a membership of 12,350, after the separation of Ireland.

Cost Analysis attached

Constitutional Note: Article III Sections 1(a) & 2 of the Multiple District Constitution (as adopted 30 April 2005 and subsequently amended 2006, 2007, 2008, 2009 and 2011):

Section 1(a) – Annual Per Capita Levy

Every District shall pay into a Multiple District administrative fund a per capita levy, based on its membership taken as at 30 June and 31 December in every year. The Council of Governors shall table a resolution at every Multiple District Convention to set the per capita levy for the following fiscal year. Such resolution must be supported by a complete list of budgets for all Multiple District officers and committees, conventions, meetings and administrative functions. If such resolution shall fail, then the per capita levy for the time being in force shall be continued until changed by resolution.

Section 2 – Collection of Per Capita Levy

Every District Treasurer shall collect such levy from Clubs in his District by two half-yearly payments, and shall pay the monies so collected to the Council Treasurer in August and February of every year.'

To be enacted, this resolution will require a simple majority of those delegates present at Convention who exercise their right to vote.

Resolution 13

Proposed by Council

Concerning the LCI Joining Fee

This Convention resolves to ask the International Board to consider reversing the increase in the Joining Fee for new members to stimulate recruitment in our Centennial Year; and to ask the International Board to look instead to implement savings, such as the use of email rather than surface mail or courier delivery for communications from The International Board, and the placing of internal directories on the LCI website rather than producing print copies.

Explanation:

The International Board has approved an increase in the Joining Fee for new members from \$25 to \$35 per new member.

MD105 is suffering a year on year decline in membership in most Sub Districts. It is believed that the increase proposed will be an impediment to recruitment of new members, many of whom are unused to being required to pay to provide voluntary service to their communities.

This is our Centennial Year, and to place any possible obstacle in the path of recruiting the members of the future should be avoided. Many Clubs pay the Joining Fee for new members from their Administration Accounts to welcome new members to the Lions Family. It is considered that an increase in this expenditure would result in financial hardship for some very small Clubs who are working hard to recruit new members and do not hold large funds available to meet increased costs.

It is recognised that The International Board has the responsibility for the finances and the expense and cost base of our organisation, but there is concern about increasing the cost of the Joining Fee for new members rather than reducing costs by using email instead of the use of surface mail or UPS Couriers for the delivery of non- confidential items of internal international communication from The International Board.

Constitutional Note: To be enacted, this resolution will require a simple majority of those delegates present at Convention who exercise their right to vote.

Resolution 14

Proposed by Council

Concerning the Redistricting of MD 105

This Convention resolves that the Council of Governors shall take all necessary steps as required by The International Board of Directors to redistrict Multiple District 105 to reduce the number of 12 sub-districts to 8 sub-districts to take effect on 1st July 2019. A list of clubs to be allocated to the proposed sub-districts and a map showing the boundaries that the new sub-districts will follow are shown at appendix 1.

Explanation:

An explanation of how the Multiple District and the sub-districts will be better served through redistricting, including a detailed plan that outlines goals and action plans to support membership growth, retention, leadership development and club support initiatives is attached herewith.

In accordance with the Emergency Resolution passed by the MD 105 Convention of 2016, and with the Resolution also passed at that Convention concerning the Redistricting of MD105 by the departure of District 105I, Ireland, from the MD with effect from 4 July 2017, the Council of Governors of 2016/17 has:

1. Submitted to the International Board a Proposal for the Redistricting of MD105 with effect from 4 July 2017 by the departure of District 105I, and referring to consideration of the redistricting of the remaining Districts of MD105 with effect from 1 July 2019. This proposal was accepted by the International Board at their meeting in October 2016.
2. Resolved that, following the approval of the International Board to the Redistricting Proposal above, the name of MD105 with effect from 4 July 2017 shall be MD105 British Isles.
3. Sent out an Information Gathering Questionnaire to all Clubs in MD105 in May 2016 seeking information from Clubs about the potential Redistricting of the remaining Districts other than District 105I.
4. Collated those responses and communicated them in August 2016 to members via the Members Forum on the MD website and via their District Governors.
5. Considered and reviewed the feedback from members and Clubs through their Districts; and, based on the preferences indicated by the majority of responders, produced and circulated on 24 October 2016 to all members via their Districts, through the Clubs in those Districts, a proposal consulting on the potential Redistricting of MD105 with effect from 1 July 2019, as required by the Emergency Resolution. The proposal was communicated by email circulation via MDHQ to Clubs, copied to District Secretaries, and published in the Members Forum Area of the MD Website.
6. Consulted with and invited the views of members, Clubs and Districts on that proposal by 31st December 2016, reflecting, in accordance with the preferences indicated by those responses to the information gathering questionnaire, a potential reduction in the number of sub-districts in MD105 from 12 to 8 with effect from 1st July 2019.

Why Redistrict MD105?

Council has considered why a Redistricting of MD105 should be undertaken.

As at 26 January 2017 10 out of the 12 sub-districts of MD105 other than District 105I had membership of less than the 1250 members deemed by Lions Clubs International to be viable to support the full range of Lionistic activity, whilst enjoying fellowship and providing service to our communities.

Membership in the MD has declined over the last 20 years from over 22,000 members to what will be around 13,000 members after 4th July 2017 when the approximately 2200 members of

District 105I, Ireland, leave. It is essential that the MD reorganises to be best equipped to do what we are here for- to deliver service to the community. To do that we need to retain our present members and to attract, recruit and retain new members to carry forwards Lionism. We cannot stand still, as that is to move backwards.

The creation of new larger Districts would provide a larger pool of potential leaders in each new District. The process of change could energize Lions who have not so far put themselves forwards to be inspired by the process of modernization and to engage as potential leaders of the future. In many Districts the District cabinets have had the same officers serving without change, or in rotation, for many years; - introducing new members to work together in New Districts will mean sometimes radical reductions in the number of District Officers needed, and this may be an opportunity to step forwards by new potential leaders who have perhaps been put off by the unchanging nature of the composition of the existing local District Cabinets.

Council believes that, in the long term, a reduction in the number of current districts from 12 to 8 New Districts will also provide long term cost savings which will enable member's subscriptions not to be increased to the extent as would otherwise occur. Cost savings were implemented following the adoption of Resolutions on Streamlining and Governance by the MD Convention of 2016, and further ongoing efficiency savings can be made to the costs of running the Multiple District if the number of districts is reduced. Council considers that any geographical reorganisation should be supported by structure and governance changes within the resulting districts, as well as at an MD level. The larger New Districts would need to work differently, using alternative communications and making more use of Zone and Regional structures. This would enable cost savings to be made at MD level without turning such savings into costs to District level.

What Would New Sub-Districts Look Like?

Council has endeavored to produce a realignment of the present District boundaries which respects the wishes of the majority of respondents indicated in the Information Gathering Questionnaire. This includes as far as possible keeping existing Zones together, keeping County boundaries together, and enabling access to major transport arteries.

A spreadsheet is attached of the proposed mapping of the realigned New Districts, which reorganizes the existing Districts into 8 New Districts from 1st July 2019.

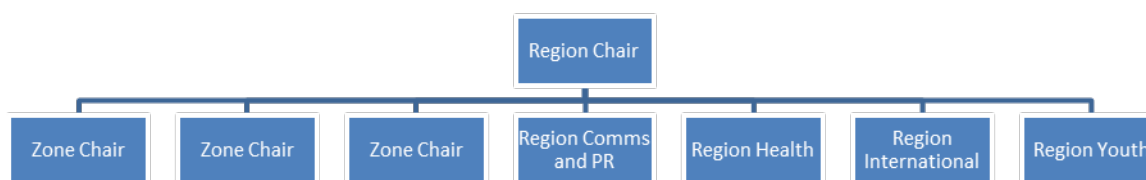
Council submits that the creation of New Districts should be based on equal standing of all Lions in the New Districts, with no element of take-over by any existing District of members coming together in New Districts from existing Districts.

The nomenclature of the proposed New Districts has been considered by Council, and Council proposes, as far as possible, that the names of the New Districts would reflect the names of existing Districts where practicable. However, it is recognized that the matter of the names of the New Districts would be a matter for the EGMs of the New Districts, and subject to the decision of those meetings.

How would the New Sub Districts be Better Managed?

Regional structure

It is suggested that within each region of a New District there would be a structure as follows, in addition to the District Governor Team and District Officers:



Meetings of the Regional Teams could be in person but also possibly via Fuze or equivalent. The Region Chairman would be the only person from the Regional Structure attending Cabinet, unless at the specific invitation of the District Governor for a specific item of business. The Region Chairman would also have localised responsibility for membership and leadership working closely with the District GMT and GLT chairmen. In a larger New District, it would be recommended that most meetings would be held via Fuze or equivalent, and each regions officers would be responsible for providing information within their region using an agreed generic presentation (thus removing the need for district officers to travel long distances). This should also reduce the perceived gulf and information gap between Clubs and District by having officers that are more local being the persons who share information and give assistance to Clubs.

It is also likely that a more modern and streamlined District organisation, with locally based and empowered officers, would encourage members to come forwards for leadership roles who have hitherto not done so.

Club visits

Club visits by the DG Team.

Over recent years LCI has advised that this should change from requiring and expecting that all Clubs must be visited by the DG to a system of the DG Team sharing the load and sharing the visits over a three-year rolling programme. LCI advises that the purpose of the visits is to communicate the International theme and projects, to encourage the Clubs and thank them for their activities, to provide leadership to Clubs needing assistance and to report back to LCI on the health and status of the club.

Financially there will be no effect on Club visits from the Redistricting of boundaries of existing Districts, as LCI will continue to pay for the DG or the DG's representative to visit each club. But there are other ways of covering the visits:

- **Visiting multiple clubs in one trip**

For the more remote clubs it may be possible to use one trip and one overnight stay to visit multiple clubs.

- **Visiting Zones**

LCI accepts Club visits being conducted by visiting a zone meeting to cover multiple clubs. This may not give the visitor a true picture of each club but the DG team member attending the meeting can ask for reports from the clubs that will cover the information needed by LCI.

- **Region Chairs**

Another option is for the Region Chairman to carry out some of the Club visits, as agreed with the DG Team.

What are the Costs and Savings which would result from this proposal?

Budget

The following is a suggested budget for a New District based on current information available, using sample data from Districts 105W and 105M:

Item	Amount	Notes
New District Convention based on median figures	3,500	<ul style="list-style-type: none"> • Social events to still be self-financing. • Similar sized venues to those used by Districts at present would still be suitable despite probable increased number of delegates
DG/DG Team Allowance	1,700	Used the larger of the two present district's figures
Autumn Forum/Handover	500	
Officers Expenses	4,000	Larger New Districts would potentially increase Officers costs, but use of Fuze meetings and a regional structure would reduce this
Cabinet meetings	1,000	
Membership/Leadership	7,000	Larger Districts would have increased funds available for Membership activity
Communications and PR	500	Includes website and Fuze licence
Equipment replacement	500	
Regalia	1000	Initial replacement, but reusing existing regalia where possible
Auditors	500	
Total Expenditure	20,200	
Sundry Income	1,000	
Dues income (based on 2,000 members)	20,000	Based on £10 per member District dues
Total Income	21,000	
Surplus	800	Available for other Membership activities?

These figures in the above draft budget for a New District have erred on the side of caution and it would be expected that the actual expenses would be lower.

Potential Savings from a Reduction in the Number of Sub Districts in MD105.

Based on the actual outturn figures cost savings at MD level, which in turn enable member's subscriptions to be maintained without increase, or with lower increases than otherwise would be likely, would be available from the proposed Redistricting:

Multiple District Budget & Forecast 2016 - 2019

	8 District Model		
	2016-2017	2019-2020	
	Recommended Budget	Strategic Forecast	Latest Forecast
Council Meetings	20,643	15,990	15,990
Council Chairman	3,860	3,500	3,500
Council Secretary	1,100	1,100	1,100
Council Treasurer	1,184	1,184	1,184
Sergeant at Arms (inc Convention Officer to 2014/15.)	0	0	0
Seminars - Net of Grant			
DG Elect Seminar	2,785	2,580	2,580
(1) VDG Elect Seminar	4,098	3,355	3,335
(2) VDG Seminar	2,867	3,355	3,335
Partner Travel - International Convention	9,575	4,300	4,300
Strategic Development Committee	600	600	600
Sp. Committees and Meetings	2,000	2,000	2,000
Insurances other than Club insurances	60,000	51,000	51,000
Directory & Postage	2,000	2,000	2,000
MD Headquarters			
Operating Costs	93,686	93,686	93,686
Rent & Refuse	8,200	8,200	8,200
Cleaning & Gardening	1,080	1,080	1,080
Repairs & Renewals	4,318	4,318	4,318
Other Expenses	2,924	2,924	2,924
Travel Aid - (105BN, 105D, 105I & 105NE)	1,500		
Independent Examination	1,500	1,500	1,500
	223,920	202,672	202,632
Communication			
Lion Magazine	85,440	66,367	66,367
IT	210	210	210
PR Committee & Publicity	38,800	33,000	33,000
	124,450	99,577	99,577
Committees			
CAC (Note 13)			
LRPC			
	0	0	0
Leadership & Membership			
Membership inc Campus Clubs, Extension	10,000	10,000	10,000
GLT/GMT Summit			
Membership Activities inc NCDP & Join Together			
Lioness Clubs Co-ordinator			
Leadership Development			

Portfolio Coordinator
Local Institute (ALLI/FDI/RLLI)

10,000	10,000	10,000
--------	--------	--------

Youth - including

Opportunities for Youth Chairman/Portfolio Coordinator

Young Ambassador

Youth Exchange - In & Out

Leo Clubs Coordinator

Life Skills Officer

Peace Poster - undertaken by MDHQ

YLIS

6,459	6,459	6,459
-------	-------	-------

International - including

International Convention

8,745

7,745

7,745

Europa Forum

Magazine Editor to Europa Forum

International Convention Committee

Portfolio Coordinator

LCIF

International Relations

Patron Liaison

15,128	14,128	14,128
--------	--------	--------

Health - including

Sight

Portfolio

Medic Alert

Speech/Hearing

Diabetes Education

Physical & Learning Disabilities

Environment

2,548	2,548	2,548
-------	-------	-------

Admin & Management

MD Officers - Attendance - Convention

Centennial Committee

2,295

Charities Treasurer

1,088

1,088

1,088

CNRO

165

165

165

Credentials Officer

Data Protection

347

347

347

Health & Safety

245

245

245

Legal Adviser

200

200

200

Welfare Appeals

Tax Adviser

250

250

250

Vulnerable Persons

796

796

796

5,386	3,091	3,091
-------	-------	-------

Total Expenditure

387,891 338,475 338,435

Council Approved Expenditure in Year

Europa Forum Voluntary Contribution 2016* &

2018

Charity Commission Review	10,000	10,000	10,000
	397,891	348,475	348,435

Auto Enrolment Pensions

Sundry Expenses

Depreciation	3,000	3,000	3,000
--------------	-------	-------	-------

Sundry Income

Net Sales	-7,500	-7,500	-7,500
-----------	--------	--------	--------

Rent	-10,300	-10,300	-10,300
------	---------	---------	---------

Injection to Dues from Insurance	-10,000	-10,000	-10,000
----------------------------------	---------	---------	---------

Interest	-5,000	-5,000	-5,000
----------	--------	--------	--------

Tax	4,400	4,400	4,400
-----	-------	-------	-------

	-25,400	-25,400	-25,400
--	---------	---------	---------

Net Full Year Expenditure	372,491	323,075	323,035
---------------------------	---------	---------	---------

Dues Required			27.61
---------------	--	--	-------

Dues Proposed			29.00
---------------	--	--	-------

Budgeted Income (Membership & Dues)	14,900	11,700	339,300
--	---------------	---------------	----------------

Projected Dues Income Full Year			339,300
--	--	--	----------------

Dues First Half year	14,900	11,700	169,650
-----------------------------	---------------	---------------	----------------

Dues Second Half	14,900	11,700	169,650
-------------------------	---------------	---------------	----------------

Projected Merger expenditure

Funds Available from LCI to New Districts

If part of a Redistricting of a Multiple District, then up to \$4 per member of the New District is available to the New District from LCI to offset much of this proposed expenditure detailed above. **However, this amount is only available if applied for as part of a programme of Redistricting of a Multiple District which has been approved by the International Board before the beginning of October 2018, - whatever the effective date of the Redistricting.** Based on a potential membership of 13,000 after District 1051 leaves, \$4 per member would be available over 3 years, providing \$52,000 of funding to cover such expenditure.

EGM Venue for New Merged District and LCI Funding Available to Offset Costs

There will need to be an Extraordinary General Meeting to elect the DG Team for the first year of the new district. An estimated maximum cost of £2,000 for room hire and PA equipment, and potential one off contribution to travelling costs, would be incurred. However, there is funding available to New Districts created under a scheme of Redistricting a Multiple District by reducing the numbers of sub districts, to offset the costs of the establishment of the New Districts.

Regalia

Although there have been suggestions from some younger members that much of our current regalia is unnecessary and old-fashioned, it is likely that the New Districts would want some regalia. Efforts could and should be made to reuse existing regalia but a one off set up budget of £1,000 could be provided for new items.

Bank Accounts

It will be necessary to merge the bank accounts and assets of existing Districts, and to operate combined bank accounts for the New Merged District. This is likely to be easier and cheaper than closing all existing accounts and reopening new accounts for the new entities.

Depending on which banks hold the accounts of the present Districts, designating one set of bank accounts as those to go forwards and working with the bank holding those accounts to rename and revise the signatories will be less time consuming and therefore cost less in terms of District Treasurer travelling expenses to agree and facilitate this. An estimated cost of say £150 for such costs should be envisaged.

Charitable Trusts held by Each Present District

As with the bank accounts, it will be necessary to proceed with the agreement of the Charities Commission to amend the details of the existing Trusts to reflect the New District. An estimated cost for District Treasurer expenses of say £100.

District Assets

District Assets such as Gazebo's, banners, flags etc.- These can still be used over their normal expected useable life, without incurring additional costs- the important thing for the public to see is the Lions Logo, and not which District it relates to.

Reserves

In the event of a merger between existing Districts, the Reserves of the previous Districts would be merged into one new reserve; however, in the event of an alteration to existing District boundaries other than as a merger, it would be recommended that the Reserves should follow the members on a pro-rate basis.

Potential Costs to Individual Members

At MD Convention 2016 concern was raised about a list of potential costs to individual members in the event of Redistricting. Some of this was associated with the set-up costs of New Districts, which is considered above, but most of the other headline figures which were raised come down to individual choice or cost which could be managed by co-operation between existing Districts.

They include:

- Attendance by individual members at an EGM to elect the District Governor Team of the New District and adopt a budget–

- the existing Districts which would be affected by the creation of a New District could agree that the EGM should be held as an adjunct of the District Convention of one of them, or they could agree to have a final joint Convention of the existing Districts and to hold the EGM as part of it.

-If an additional separate meeting is needed for the EGM, attending an additional joint meeting would be an additional expense for the delegates attending and the Districts involved might want to consider using some reserves to help offset travelling costs to attend, subject to the rules of audit, and the sharing of transport wherever possible.

- Attendance at future Conventions of a new larger district – Generally it is likely that those members who currently regularly attend conventions will continue to do so at their own expense. While the maximum distance from one edge of a New District to the other side of the New District may be greater than the previous maximum distance of

the boundaries of the existing Districts, a decision to have future centrally hosted conventions in the New District would result in little if any greater distance to be travelled by members attending future Conventions than from the edges of the current districts to conventions on the other edge of the current districts, and in many cases the distance to travel might even be shorter than at present .

- Regalia – District (covered above). Many items can be reused, and only an initial one-off set up outlay for basic new regalia would be needed. It might also be that the New Districts may decide to move away from the idea of traditional regalia and towards a more modern approach.
- Regalia – Club. Most Club regalia does not refer to a District and, in any case, district designation is only of interest to other Lions, and not to the communities who we serve.
- Clothing.

Club shirts etc. may mention Districts, but it is the members' personal choice if they wish to replace them. Members will continue to wear with pride shirts which say "District Governor" or "Council Chairman" or "Europa Forum" until they wear out because:

- a. they have a date on them and
- b. the most important thing on them is the Lions' logo.

There is therefore no necessary and unavoidable expenditure which must be incurred by individual members on clothing resulting from any programme of Redistricting or merger, and it is purely a matter of individual choice and is not a relevant item to include.

What steps would need to be taken to create the New Sub Districts, and When?

Implementation Plan

To achieve the proposed implementation date of 1st July 2019, the following outline plan is proposed:

Target Date	Action
MD105 Convention 2017	Approve Redistricting Proposal
May 2017	Form provisional MD implementation team, and provision teams for each of the proposed new sub-districts
60 days before the October 2017 meeting of The International Board	Submit proposal to The International Board
October 2017 International Board meeting	Obtain approval from International Board
October 2017-June 2018	Plan EGM's, financial adjustments, new district constitutions etc.
July 2018	Send out notice of EGM's to elect new district DG Teams
September 2018	Hold EGM's, elect DG Teams for 2019/20. Appoint new district key officers including District Treasurers.
October 2018-April 2019	Appoint new cabinets and plans for new districts
June 2019	DGE's attend DGE training.
1 st July 2019	New Districts formed, and assets transferred.

Constitutional Note: To be enacted, this resolution will a simple majority of the registered and certified delegates.

Resolution 15

**Proposed by District C
Seconded by District E**

Concerning the Redistricting of MD 105

This convention resolves to merge the current districts 105C and 105E to form one consolidated district.

Explanation:

1 The District membership of Districts C and E recognise that the M.D. 105 proposal for redistricting of the MD is necessary and needed to develop the Lions organisation of 105 into the future.

By accepting this proposal in principle, the desire of Districts C and E to merge into one District, meets the criteria mentioned in the Council of Governors minutes which were circulated to all Presidents and Secretaries that "Some Districts might welcome mergers of the willing"

Both Districts C and E are willing.

2 The new merged District would meet the International membership criteria with a membership in excess of 2000, with a neutral effect on membership dues.

3 The merger would ensure a strong cohesive membership, with strength to meet the challenges that our organisation face in the future. There is a synergy of ideas and temperament within the two Districts and of course - a shared history. Today Clubs in both Districts already work together on projects and with the merger this will enhance and strengthen the relationship to form closer bonds between Clubs working together on Community projects.

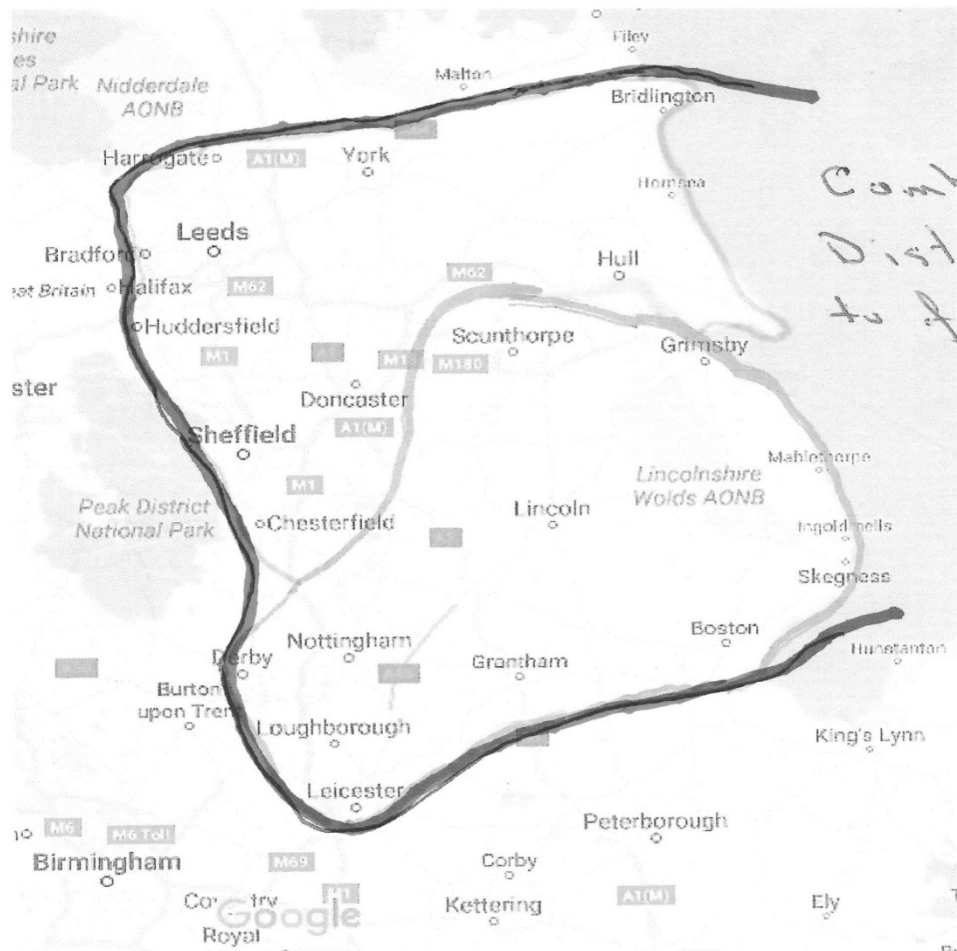
4 The proposed new merged District has excellent travel connections, ensuring cost effectiveness and offers more economical use of resources including time.

5 The two Districts would retain current membership, clubs and zones, allowing for a smooth transition and the opportunity to develop good leaders through leadership and membership development, in this enlarged pool of members.

6 From the information provided by the MD Council Treasurer in October 2016 it is reasonable to assume savings to the MD should be in excess of £2,500. We can see no reason why the savings should be any different by the merger of two willing Districts to those stated by the Council Treasurer.

7 If carried, this Resolution will have no impact on the remainder of the current MD105, other than a financial saving estimated by the Council Treasurer to be in excess of £2,500.

8 The merged Districts will be for the benefit of the community, contribute to the continued development of the MD through shared resources and the willingness of the members.



Constitutional Note: To be enacted, this resolution will a simple majority of the registered and certified delegates.

Resolution 16

Proposed by District BN

Concerning the Peace Poster Competition

This Convention instructs the Council of Governors to ask the International Board of Directors of Lions Clubs International to consider amending the rules of the Peace Poster Competition to allow International paper size A3 (29.7cm x 42cm - 11.7" x 16.5") as well as/instead of the current size range (13" x 20" - 33cm x 50.8cm to 20" x 24" - 50.8cm x 61.0cm). This latter range has no American Standard (ANSI) designation.

Explanation:

Paper size A3 is an International Standard Organisation (ISO) designation and a metric size used almost everywhere in the World whereas the range specified has no ANSI or ISO equivalent. This means that reproduction for publicity purposes can present problems, even in America. This paper is readily available 'off the shelf' in most countries and therefore no cutting to size is involved.

We are also aware that the US Government has been trying for over 30 years to introduce the Metric system and that most if not all ANSI standards are now written with metric dimensions given first with Imperial dimensions relegated to the end of these documents.

The use of an ISO recognised size brings the Peace Poster rules up to date and facilitates reproduction of the winning posters for publicity purposes.

Constitutional Note: To be enacted, this resolution will require a simple majority of those delegates present at Convention who exercise their right to vote.

Resolution 17

Proposed by The Lions Club of Alton Seconded by Meon Valley Lions Club

Concerning an amendment to the MD Constitution

This Convention resolves to amend Article III Section 5 of the Multiple District Constitution by amending the end of the final sentence by deleting the phrase:

"... except for any shortfall in reimbursement for travel costs for the partners of District Governors Elect to attend the International Convention as a result of Lions Clubs International limiting the amount of their reimbursement".

and replacing it with:

"except that, with effect from 1st July 2019, the amount payable to the partner of a District Governor (Elect) of a District in transition by the Multiple District shall be equal to the amount which would have been payable by Lions Clubs International to that partner if their District were not in transition."

So that this section will read:

"The Council shall authorise all expenditure and disbursements relating to Multiple District affairs. The Council shall lay down rules of audit governing maximum sums payable by way of expenses for travelling and accommodation. These rules shall be reviewed and authorised by Council at its final meeting in every year. Payments may not be made to any member of the Council or to any other person which are supplementary to that claimable from International Headquarters or any other source except that, with effect from 1st July 2019, the amount payable to the partner of a District Governor (Elect) of a District in transition by the Multiple District shall be equal to the amount which would have been payable by Lions Clubs International to that partner if their District were not in transition."

Explanatory Notes:

Effective from 2010, Lions Clubs International determined that a \$500 limit for reimbursement of DG Elect (DGE) spouse travel to DGE School and International Convention be applied. Currently, travel costs for the partners of those DGEs whose Districts are in transition, are paid for, in full, by the MD; partners of those DGEs whose Districts are not in transition, receive \$500 from LCI plus the balance from the MD.

We consider the amount determined periodically by LCI to be the appropriate amount for any DGE to receive for their partner's travel costs. Therefore, any MD contribution should be limited to that amount for any District in transition and there should be no additional payment made to any DG to pay the full travel cost.

The 2016-17 MD105 Partner Travel budget is £9,575 in respect of 12 District Governors Elect attending the International Convention; the 2017-18 budget is proposed to be the same. The net effect of approving this Resolution will be to reduce MD expenditure by £6,450 if 10 Districts are still in transition and by £9,575 if redistricting results in all Districts being out of transition.

We recognise that the current 2nd Vice District Governors & 2nd Vice District Governors Elect will have understood that they would receive payment on the current basis, so propose the change be implemented with effect from 1st July 2019

Constitutional Note: To be enacted, this resolution will require a two thirds majority of those delegates present at Convention who exercise their right to vote.

END

Appendix 1

Resolution 14

Redistricting of MD105

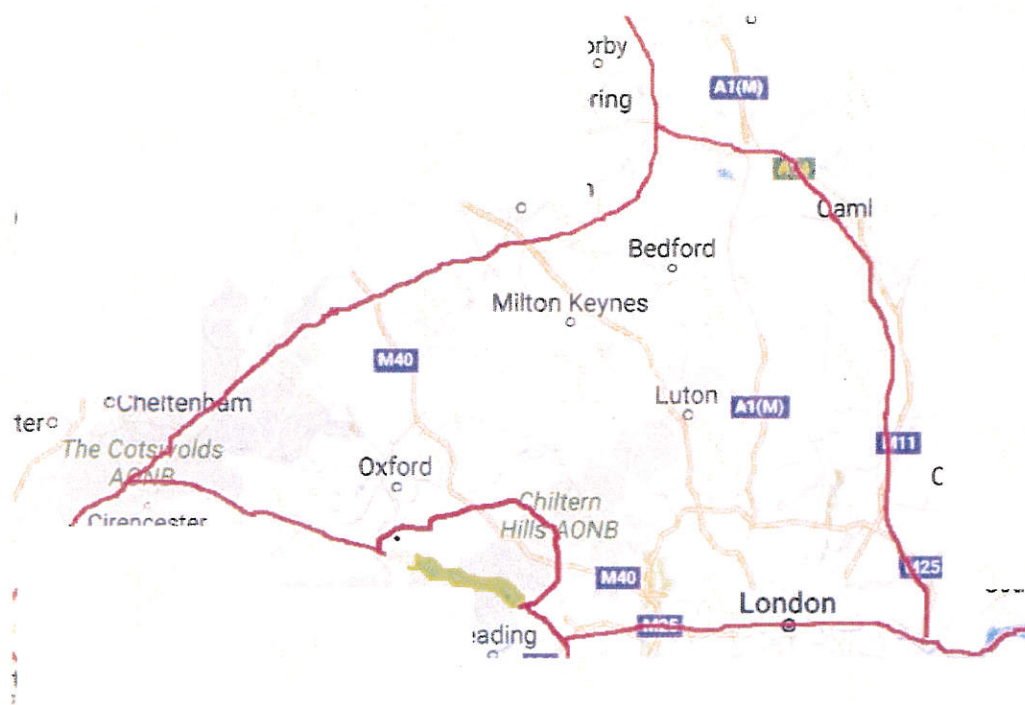




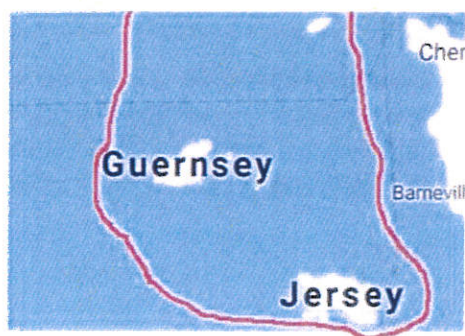
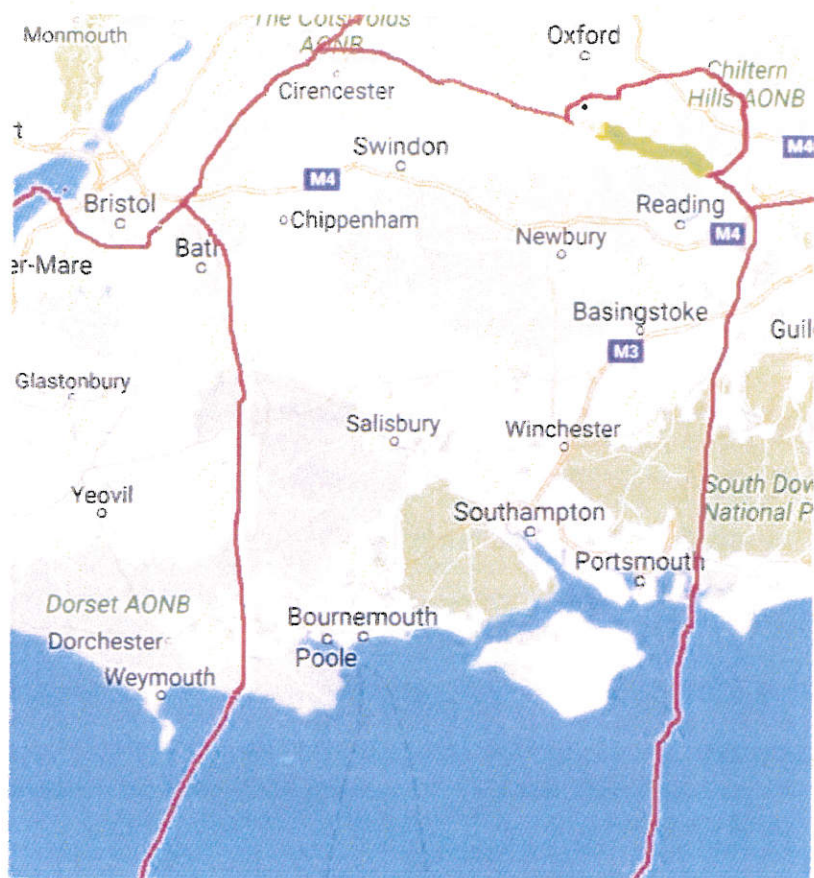














District	Clubs	Members		Current Districts	A	BN	BS	C	D	E	EA	M	NE	SE	SW	W
Members	12927				1488	778	840	940	1226	1083	1253	973	648	1564	1178	956
105 A	76	1488	HC to A they have lost Zone M 74 members to SC gained nothing		-74				74							
105 BN	48	778	Have Merged with BS and gained Zones E&F from E 166 members plus Buxton from C			166				-166						
105 BS	54	840	Merged with BN in full			840	-840									
105 C	54	940	Merged with NE in full, Transfer Buxton to CN													
105 D	60	1226	Plus Zone M from A 148 members and Zone H from wless zone A to SW -70 members			19		-19	148							-148
105 E	54	1083	Merge with EA Zones E & F to BN, Zone I to M/W						-70						70	
105 EA	64	1253	Plus Zones A,B,C,D,G,H from E 433 members							-767	767					
105 M	53	973	Merge with W less Zones J 75 and H148 plus Zone I from E 150							-150		150				
105 NE	36	648	Merged with C in full plus					648								
105 SE	64	1564	No change									733				-733
105 SW	58	1178	Plus Zone J from W +75 members Zone A from D +70 members													
105 W	49	957	Merge less Zones J 75 and H 148 with M												75	-75
12928																

Members	12927	1414	1803	0	1569	1378	0	2020	1856	0	1564	1323	0
Proposed Districts		HC	CN		N	SC		CE	CW		SE	SW	

Current			Proposed					
105 A	Zone: A	LONDON CENTRAL HOST	105 HC	Zone: A				
105 A	Zone: A	LONDON CHINATOWN	105 HC	Zone: A				
105 A	Zone: A	LONDON COVENT GARDEN	105 HC	Zone: A				
105 A	Zone: A	LONDON WESTMINSTER	105 HC	Zone: A				
105 A	Zone: A	THE PALACE OF WESTMINSTER	105 HC	Zone: A	Zone: A	5	Zone: A	107
105 A	Zone: B	BARKING	105 HC	Zone: B				
105 A	Zone: B	FAIRLOP	105 HC	Zone: B				
105 A	Zone: B	LONDON SEVEN KINGS	105 HC	Zone: B				
105 A	Zone: B	Waltham Forest	105 HC	Zone: B				
105 A	Zone: B	WANSTEAD & WOODFORD L C	105 HC	Zone: B	Zone: B	5	Zone: B	82
105 A	Zone: C	FELTHAM & WHITTON	105 HC	Zone: C				
105 A	Zone: C	FULHAM	105 HC	Zone: C				
105 A	Zone: C	HOUNSLOW	105 HC	Zone: C				
105 A	Zone: C	OSTERLEY	105 HC	Zone: C				
105 A	Zone: C	Uxbridge	105 HC	Zone: C	Zone: C	5	Zone: C	68
105 A	Zone: D	EALING	105 HC	Zone: D				
105 A	Zone: D	GREENFORD WILLOW TREE	105 HC	Zone: D				
105 A	Zone: D	HAYES & HARLINGTON	105 HC	Zone: D				
105 A	Zone: D	LONDON ACTON	105 HC	Zone: D				
105 A	Zone: D	LONDON PARK ROYAL	105 HC	Zone: D				
105 A	Zone: D	SOUTHALL	105 HC	Zone: D				
105 A	Zone: D	SUDBURY	105 HC	Zone: D	Zone: D	7	Zone: D	168
105 A	Zone: E	EDGWARE	105 HC	Zone: E				
105 A	Zone: E	KENTON	105 HC	Zone: E				
105 A	Zone: E	LONDON BELMONT	105 HC	Zone: E				
105 A	Zone: E	LONDON GOLDERS GREEN L C	105 HC	Zone: E				
105 A	Zone: E	LONDON HENDON	105 HC	Zone: E				
105 A	Zone: E	LONDON KINGSBURY	105 HC	Zone: E				
105 A	Zone: E	STANMORE	105 HC	Zone: E				
105 A	Zone: E	WEMBLEY	105 HC	Zone: E	Zone: E	8	Zone: E	181
105 A	Zone: F	CHIPPING BARNET	105 HC	Zone: F				
105 A	Zone: F	ENFIELD	105 HC	Zone: F				
105 A	Zone: F	HADLEY WOOD	105 HC	Zone: F				
105 A	Zone: F	LONDON HORNSEY	105 HC	Zone: F				
105 A	Zone: F	LONDON MILL HILL	105 HC	Zone: F				
105 A	Zone: F	LONDON SWISS COTTAGE	105 HC	Zone: F				
105 A	Zone: F	LONDON-FINCHLEY L C	105 HC	Zone: F				
105 A	Zone: F	SOUTHGATE	105 HC	Zone: F	Zone: F	8	Zone: F	137
105 A	Zone: G	HARROW & PINNER	105 HC	Zone: G				
105 A	Zone: G	MOOR PARK	105 HC	Zone: G				
105 A	Zone: G	NORTHWOOD	105 HC	Zone: G				
105 A	Zone: G	RUISLIP	105 HC	Zone: G	Zone: G	4	Zone: G	105
105 A	Zone: H	BERKHAMSTED	105 HC	Zone: H				
105 A	Zone: H	HARPENDEN	105 HC	Zone: H				
105 A	Zone: H	HEMEL HEMPSTEAD	105 HC	Zone: H				
105 A	Zone: H	ST ALBANS	105 HC	Zone: H				
105 A	Zone: H	TRING	105 HC	Zone: H				
105 A	Zone: H	WATFORD	105 HC	Zone: H				
105 A	Zone: I	HITCHIN	105 HC	Zone: H	Zone: H	7	Zone: H	126
105 A	Zone: I	LETCHWORTH GARDEN CITY & BALDOCK	105 HC	Zone: I				
105 A	Zone: I	ROYSTON	105 HC	Zone: I				
105 A	Zone: I	STEVENAGE COREY'S MILL	105 HC	Zone: I	Zone: I	3	Zone: I	51

105 A	Zone:J	AMPTHILL DISTRICT	105 HC	Zone: J					
105 A	Zone:J	BEDFORD	105 HC	Zone: J					
105 A	Zone:J	BIGGLESWADE-SANDY L C	105 HC	Zone: J					
105 A	Zone:J	Eaton Bray & Edlesborough	105 HC	Zone: J					
105 A	Zone:J	LUTON	105 HC	Zone: J	Zone: J	5	Zone: J	86	
105 A	Zone:K	BLETCHLEY MILTON KEYNES	105 HC	Zone: K					
105 A	Zone:K	MILTON KEYNES CENTRAL	105 HC	Zone: K					
105 A	Zone:K	MILTON KEYNES STONY STRATFORD	105 HC	Zone: K					
105 A	Zone:K	NEWPORT PAGNELL & OLNEY L C	105 HC	Zone: K					
105 A	Zone:K	WINSLOW	105 HC	Zone: K	Zone: K	5	Zone: K	129	
105 A	Zone:L	AMERSHAM & CHESHAM L C	105 HC	Zone: L					
105 A	Zone:L	AYLESBURY	105 HC	Zone: L					
105 A	Zone:L	BEACONSFIELD	105 HC	Zone: L					
105 A	Zone:L	HIGH WYCOMBE	105 HC	Zone: L	Zone: L	4	Zone: L	95	
105 A	Zone:N	BANBURY	105 HC	Zone: N					
105 A	Zone:N	BICESTER	105 HC	Zone: N					
105 A	Zone:N	CHIPPING NORTON	105 HC	Zone: N					
105 A	Zone:N	WITNEY	105 HC	Zone: N					
105 A	Zone:N	BANBURY	105 HC	Zone: N	Zone: N	5	Zone: N	79	
						71		1414	

Current			Proposed CN						
105 BN	REGION 1 (I	COCKERMOUTH	105 CN	Zone: A					
105 BN	REGION 1 (I	KESWICK	105 CN	Zone: A					
105 BN	REGION 1 (I	MARYPORT	105 CN	Zone: A					
105 BN	REGION 1 (I	PENRITH	105 CN	Zone: A					
105 BN	REGION 1 (I	WEST CUMBERLAND L C	105 CN	Zone: A					
105 BN	REGION 1 (I	WHITEHAVEN & DISTRICT	105 CN	Zone: A	Zone: A	6	Zone: A	117	117
105 BN	REGION 1 (I	ISLE OF MAN L C	105 CN	Zone: C					
105 BN	REGION 1 (I	LANCASTER MORECAMBE	105 CN	Zone: C					
105 BN	REGION 1 (I	FURNESS	105 CN	Zone: B					
105 BN	REGION 1 (I	GRANGE-OVER-SANDS & DIST L C	105 CN	Zone: B					
105 BN	REGION 1 (I	KENDAL & DISTRICT	105 CN	Zone: B					
105 BN	REGION 1 (I	LANCASTER MORECAMBE	105 CN	Zone: B					
105 BN	REGION 1 (I	WINDERMERE AND AMBLESIDE	105 CN	Zone: B	Zone: B	5	Zone: B	66	
105 BN	REGION 1 (I	BLACKPOOL	105 CN	Zone: C					
105 BN	REGION 1 (I	FLEETWOOD & CLEVELEYS	105 CN	Zone: C					
105 BN	REGION 1 (I	GARSTANG DISTRICT L C	105 CN	Zone: C					
105 BN	REGION 1 (I	KIRKHAM & FYLDE RURAL LC	105 CN	Zone: C					
105 BN	REGION 1 (I	LYTHAM ST ANNES	105 CN	Zone: C	Zone: C	7	Zone: C	126	
105 BN	REGION 1 (I	BOLTON	105 CN	Zone: D					
105 BN	REGION 1 (I	CHORLEY	105 CN	Zone: D					
105 BN	REGION 1 (I	LEYLAND AND CUERDEN VALLEY L C	105 CN	Zone: D	Zone: D	3	Zone: D	50	
105 BN	REGION 1 (I	ACCRINGTON	105 CN	Zone: A					
105 BN	REGION 1 (I	BLACKBURN	105 CN	Zone: A					
105 BN	REGION 1 (I	BURNLEY	105 CN	Zone: A					
105 BN	REGION 1 (I	CLITHEROE	105 CN	Zone: A					
105 BN	REGION 1 (I	DARWEN LANCS	105 CN	Zone: A					
105 BN	REGION 1 (I	ROSSENDALE	105 CN	Zone: A					
105 BN	REGION 1 (I	Whalley and District	105 CN	Zone: A	Zone: A	7	Zone: A	101	
105 BN	REGION 1 (I	HEYWOOD	105 CN	Zone: O					
105 BN	REGION 1 (I	LITTLEBOROUGH & DIST LC	105 CN	Zone: O					
105 BN	REGION 1 (I	OLDHAM DISTRICT	105 CN	Zone: O					
105 BN	REGION 1 (I	ROCHDALE	105 CN	Zone: O	Zone: O	4	Zone: O	42	
105 BN	REGION 1 (I	CROSBY & DIST	105 CN	Zone: E					
105 BN	REGION 1 (I	DOUGLAS VALLEY L C	105 CN	Zone: E					
105 BN	REGION 1 (I	LIVERPOOL	105 CN	Zone: E					
105 BN	REGION 1 (I	ORMSKIRK & MAGHULL	105 CN	Zone: E					
105 BN	REGION 1 (I	SOUTHPORT	105 CN	Zone: E					
105 BN	REGION 1 (I	UPHOLLAND TAWD VALE	105 CN	Zone: E	Zone: E	6	Zone: E	148	
105 BN	REGION 1 (I	BIRCHWOOD	105 CN	Zone: F					
105 BN	REGION 1 (I	LEIGH	105 CN	Zone: F					
105 BN	REGION 1 (I	WARRINGTON	105 CN	Zone: F	Zone: F	3	Zone: F	62	
105 BN	REGION 1 (I	BURY	105 CN	Zone: G					
105 BN	REGION 1 (I	CITY OF SALFORD	105 CN	Zone: G					
105 BN	REGION 1 (I	MANCHESTER CHINATOWN	105 CN	Zone: G					
105 BN	REGION 1 (I	PEEL L C	105 CN	Zone: G					
105 BN	REGION 1 (I	PRESTWICH	105 CN	Zone: G					
105 BN	REGION 1 (I	RADCLIFFE & WHITEFIELD	105 CN	Zone: G					
105 BN	REGION 1 (I	STRET福德 & DISTRICT L C	105 CN	Zone: G	Zone: G	7	Zone: G	66	661
105 BS	Zone: A	ANGLESEY CENTRAL L C	105 CN	Zone: H					
105 BS	Zone: A	BEAUMARIS-MENAI-AETHWY	105 CN	Zone: H					
105 BS	Zone: A	CAERNARFON	105 CN	Zone: H					
105 BS	Zone: A	CITY OF BANGOR L C	105 CN	Zone: H					
105 BS	Zone: A	PWLLHELI & DISTRICT	105 CN	Zone: H	Zone: H	5	Zone: H	49	
105 BS	Zone: B	COLWYN BAY & DISTRICT L C	105 CN	Zone: I					
105 BS	Zone: B	LITTLE ORME	105 CN	Zone: I					
105 BS	Zone: B	LLANDUDNO	105 CN	Zone: I					
105 BS	Zone: B	LLANRWST	105 CN	Zone: I					
105 BS	Zone: B	PRESTATYN AND RHYL LC	105 CN	Zone: I	Zone: I	5	Zone: I	71	
105 BS	Zone: C	BUCKLEY & MOLD	105 CN	Zone: J					
105 BS	Zone: C	FLINT & DISTRICT L C	105 CN	Zone: J					
105 BS	Zone: C	MARKET DRAYTON	105 CN	Zone: J					

105 BS	Zone: C	OSWESTRY	105 CN	Zone: J				
105 BS	Zone: C	VALE OF LLANGOLLEN	105 CN	Zone: J				
105 BS	Zone: C	WHITCHURCH & DISTRICT	105 CN	Zone: J				
105 BS	Zone: C	WREXHAM MAELOR	105 CN	Zone: J	Zone: J	7	Zone: J	89
105 BS	Zone: D	BIRKENHEAD	105 CN	Zone: K				
105 BS	Zone: D	CHESTER	105 CN	Zone: K				
105 BS	Zone: D	ELLESMERE PORT	105 CN	Zone: K				
105 BS	Zone: D	WALLASEY	105 CN	Zone: K				
105 BS	Zone: D	WEST KIRBY	105 CN	Zone: K				
105 BS	Zone: D	WIRRAL	105 CN	Zone: K	Zone: K	6	Zone: K	118
105 BS	Zone: E	ROMILEY MARPLE & DISTRICT	105 CN	Zone: L				
105 BS	Zone: E	SALE DISTRICT L C	105 CN	Zone: L				
105 BS	Zone: E	STOCKPORT	105 CN	Zone: L				
105 BS	Zone: E	STOCKTON HEATH & DISTRICT	105 CN	Zone: L				
105 BS	Zone: E	URMSTON	105 CN	Zone: L				
105 BS	Zone: E	WILMSLOW	105 CN	Zone: L	Zone: L	6	Zone: L	69
105 BS	Zone: F	ALSAGER	105 CN	Zone: M				
105 BS	Zone: F	CONGLETON	105 CN	Zone: M				
105 BS	Zone: F	CREWE & NANTWICH L C	105 CN	Zone: M				
105 BS	Zone: F	KNUTSFORD & DISTRICT L C	105 CN	Zone: M				
105 BS	Zone: F	MACCLESFIELD & DISTRICT	105 CN	Zone: M				
105 BS	Zone: F	VALE ROYAL	105 CN	Zone: M				
105 BS	Zone: G	CHEADLE	105 CN	Zone: N				
105 BS	Zone: G	GNOSALL	105 CN	Zone: N				
105 BS	Zone: G	LEEK	105 CN	Zone: N				
105 BS	Zone: G	NEWCASTLE UNDER LYME	105 CN	Zone: N				
105 BS	Zone: G	STOKE ON TRENT L C	105 CN	Zone: N				
105 BS	Zone: G	STONE	105 CN	Zone: N				
105 BS	Zone: G	UTTOXETER	105 CN	Zone: N	Zone: N	7	Zone: N	141
105 BS	Zone: H	BRIDGNORTH	105 CN	Zone: A				
105 BS	Zone: H	IRONBRIDGE-SEVERN GORGE L C	105 CN	Zone: A				
105 BS	Zone: H	MIDDLE MARCHES	105 CN	Zone: A				
105 BS	Zone: H	NEWPORT SHROPSHIRE & DIST	105 CN	Zone: A				
105 BS	Zone: H	TELFORD	105 CN	Zone: A	Zone: A	5	Zone: A	79
105 BS	Zone: I	BURNTHWOOD	105 CN	Zone: B				
105 BS	Zone: I	CANNOCK	105 CN	Zone: B				
105 BS	Zone: I	Hednesford Centennial	105 CN	Zone: B				
105 BS	Zone: I	LICHFIELD	105 CN	Zone: B				
105 BS	Zone: I	RUGELEY AND DISTRICT	105 CN	Zone: B				
105 BS	Zone: I	STAFFORD	105 CN	Zone: B				
105 BS	Zone: I	TAMWORTH	105 CN	Zone: B	Zone: B	7	Zone: B	126
105 C	Zone: G	BUXTON & DIST	105 CN	Zone: M	Zone: M	7	Zone: M	117
105 E	Zone: E	ASHBOURNE & DISTRICT	105 CN	Zone: P				
105 E	Zone: E	DERBY	105 CN	Zone: P				
105 E	Zone: E	ILKESTON	105 CN	Zone: P				
105 E	Zone: E	MATLOCK DERWENT VALLEY	105 CN	Zone: P				
105 E	Zone: E	RIPLEY AMBER VALLEY	105 CN	Zone: P	Zone: P	5	Zone: P	76
105 E	Zone: F	ASHBY-DE-LA-ZOUCH & COALVILLE	105 CN	Zone: Q				
105 E	Zone: F	LOUGHBOROUGH	105 CN	Zone: Q				
105 E	Zone: F	ROTHLEY SOAR VALLEY	105 CN	Zone: Q				
105 E	Zone: F	SHEPSHED	105 CN	Zone: Q				
105 E	Zone: F	SWADLINCOTE & DISTRICT L C	105 CN	Zone: Q	Zone: Q	5	Zone: Q	90

Current			Proposed N					
105 C	Zone: A	BOROUGHBRIDGE 98	105 N	Zone: C				
105 C	Zone: A	DERWENT L C	105 N	Zone: C				
105 C	Zone: A	HARROGATE	105 N	Zone: C				
105 C	Zone: A	KNARESBOROUGH	105 N	Zone: C				
105 C	Zone: A	MINSTER LIONS CLUB OF YORK	105 N	Zone: C				
105 C	Zone: A	RIPON	105 N	Zone: C				
105 C	Zone: A	WETHERBY DISTRICT L C	105 N	Zone: C				
105 C	Zone: A	YORK	105 N	Zone: C	Zone: C	8	Zone: C	160
105 C	Zone: B	BRADFORD CENTRAL	105 N	Zone: D				
105 C	Zone: B	GUISELEY AND DISTRICT	105 N	Zone: D				
105 C	Zone: B	KEIGHLEY	105 N	Zone: D				
105 C	Zone: B	OTLEY	105 N	Zone: D	Zone: D	4	Zone: D	69
105 C	Zone: C	BRIGHOUSE & DISTRICT	105 N	Zone: E				
105 C	Zone: C	COLNE VALLEY	105 N	Zone: E				
105 C	Zone: C	DENBY DALE DISTRICT L C	105 N	Zone: E				
105 C	Zone: C	HOLMFIRTH & MELTHAM	105 N	Zone: E				
105 C	Zone: C	HUDDERSFIELD	105 N	Zone: E				
105 C	Zone: C	TODMORDEN	105 N	Zone: E	Zone: E	6	Zone: E	110
105 C	Zone: D	ELMET	105 N	Zone: F				
105 C	Zone: D	GARFORTH & DISTRICT L C	105 N	Zone: F				
105 C	Zone: D	LEEDS	105 N	Zone: F				
105 C	Zone: D	LEEDS SKYRACK	105 N	Zone: F				
105 C	Zone: D	MORLEY & DISTRICT	105 N	Zone: F				
105 C	Zone: D	ROTHWELL DISTRICT L C	105 N	Zone: F	Zone: F	6	Zone: F	113
105 C	Zone: E	CASTLEFORD & PONTEFRACT DISTRICT	105 N	Zone: G				
105 C	Zone: E	FEATHERSTONE	105 N	Zone: G				
105 C	Zone: E	NORMANTON & DISTRICT	105 N	Zone: G				
105 C	Zone: E	SELBY DISTRICT	105 N	Zone: G	Zone: G	4	Zone: G	62
105 C	Zone: F	DONCASTER	105 N	Zone: H				
105 C	Zone: F	DONCASTER WENT VALLEY	105 N	Zone: H				
105 C	Zone: F	MALTBY ROTHER VALLEY L C	105 N	Zone: H				
105 C	Zone: F	THORNE RURAL L C	105 N	Zone: H				
105 C	Zone: F	TICKHILL & DISTRICT L C	105 N	Zone: H				
105 C	Zone: F	WARMSWORTH EDLINGTON	105 N	Zone: H	Zone: H	6	Zone: H	74
105 C	Zone: F	MALTBY ROTHER VALLEY L C	105 N	Zone: O				
105 C	Zone: F	THORNE RURAL L C	105 N	Zone: O	Zone: O	2	Zone: O	20
105 C	Zone: G	BARNSELY DISTRICT L C	105 N	Zone: I				
105 C	Zone: G	BRAMLEY AND WICKERSLEY	105 N	Zone: I				
105 C	Zone: G	MEXBOROUGH	105 N	Zone: I				
105 C	Zone: G	ROTHERHAM	105 N	Zone: I				
105 C	Zone: G	Sheffield Centennial	105 N	Zone: I	Zone: I	5	Zone: I	76
105 C	Zone: H	BEVERLEY	105 N	Zone: J				
105 C	Zone: H	Beverley Westwood	105 N	Zone: J				
105 C	Zone: H	GOOLE DISTRICT L C	105 N	Zone: J				
105 C	Zone: H	HALTEMPRICE L C	105 N	Zone: J				
105 C	Zone: H	HULL KINGSTON	105 N	Zone: J				
105 C	Zone: H	POCKLINGTON DISTRICT	105 N	Zone: J	Zone: J	6	Zone: J	96
105 C	Zone: I	BRIDLINGTON	105 N	Zone: L				
105 C	Zone: I	DRIFFIELD DISTRICT	105 N	Zone: L				
105 C	Zone: I	HOLDERNESS	105 N	Zone: L				
105 C	Zone: I	HORNSEA DISTRICT L C	105 N	Zone: L				
105 C	Zone: I	NORTH WOLDS	105 N	Zone: L				
105 C	Zone: I	WITHERNSEA	105 N	Zone: L	Zone: L	6	Zone: L	141
105 NE	Zone: B	AYR & PRESTWICK L C	105 N	Zone: P				921
105 NE	Zone: B	DALBEATTIE & DIST L C	105 N	Zone: P				
105 NE	Zone: B	DUMFRIES	105 N	Zone: P				
105 NE	Zone: B	MACHARS	105 N	Zone: P	Zone: P	4	Zone: P	50
105 NE	Zone: C	ABERDEEN	105 N	Zone: K				
105 NE	Zone: C	ABERDEEN BON ACCORD	105 N	Zone: K				
105 NE	Zone: C	BANCHORY	105 N	Zone: K				
105 NE	Zone: C	GARIOCH L C	105 N	Zone: K				
105 NE	Zone: C	STONEHAVEN & DISTRICT L C	105 N	Zone: K	Zone: K	5	Zone: K	83
105 NE	Zone: D	CITY OF EDINBURGH L C	105 N	Zone: M				
105 NE	Zone: D	DUMBARTON	105 N	Zone: M				
105 NE	Zone: D	DUNDEE CITY	105 N	Zone: M				
105 NE	Zone: D	DUNFERMLINE	105 N	Zone: M				
105 NE	Zone: D	HELENSBURGH	105 N	Zone: M				
105 NE	Zone: D	KIRKCALDY & DISTRICT	105 N	Zone: M				
105 NE	Zone: D	OBAN & LORN L C	105 N	Zone: M	Zone: M	7	Zone: M	79
105 NE	Zone: E	ALLENDALE	105 N	Zone: N				

105 NE	Zone: E	ALNWICK	105 N	Zone: N					
105 NE	Zone: E	MORPETH	105 N	Zone: N					
105 NE	Zone: E	PONTELAND	105 N	Zone: N					
105 NE	Zone: E	PRUDHOE MID TYNE	105 N	Zone: N					
105 NE	Zone: E	TYNEDALE L C	105 N	Zone: N	Zone: N	6	Zone: N	141	
105 NE	Zone: F	CONSETT	105 N	Zone: Q					
105 NE	Zone: F	DARLINGTON	105 N	Zone: Q					
105 NE	Zone: F	DURHAM CITY	105 N	Zone: Q					
105 NE	Zone: F	PETERLEE & DIST	105 N	Zone: Q					
105 NE	Zone: F	SUNDERLAND	105 N	Zone: Q					
105 NE	Zone: F	TEESDALE DISTRICT L C	105 N	Zone: Q					
105 NE	Zone: F	YARM DISTRICT L C	105 N	Zone: Q	Zone: Q	7	Zone: Q	109	
105 NE	Zone: G	EASINGWOLD DISTRICT L C	105 N	Zone: R					
105 NE	Zone: G	FILEY	105 N	Zone: R					
105 NE	Zone: G	MALTON NORTON	105 N	Zone: R					
105 NE	Zone: G	RYEDALE L C	105 N	Zone: R					
105 NE	Zone: G	SCARBOROUGH	105 N	Zone: R					
105 NE	Zone: G	THIRSK & NORTHALLERTON	105 N	Zone: R					
105 NE	Zone: G	WHITBY DISTRICT L C	105 N	Zone: R	Zone: R	7	Zone: R	186	648
						89		1569	1569

Current			Proposed SC						
105 A	Zone:M	ABINGDON	105 SC	Zone: M					
105 A	Zone:M	ABINGDON	105 SC	Zone: M					
105 A	Zone:M	CARTERTON	105 SC	Zone: M					
105 A	Zone:M	THAME	105 SC	Zone: M					
105 A	Zone:M	WANTAGE & GROVE L C	105 SC	Zone: M	Zone: M	5	Zone: M	74	74
105 D	1 1B	BLANDFORD AND DISTRICT L C	105 SC	Zone: C					
105 D	1 1B	BOURNEMOUTH	105 SC	Zone: C					
105 D	1 1B	POOLE	105 SC	Zone: C					
105 D	1 1B	SOUTHBOURNE AND BOSCOMBE	105 SC	Zone: C					
105 D	1 1B	WAREHAM	105 SC	Zone: C					
105 D	1 1B	WIMBORNE & FERNDOWN	105 SC	Zone: C	Zone: C	6	Zone: C	112	
105 D	2 2C	BRADFORD ON AVON	105 SW	Zone: D					
105 D	2 2C	GILLINGHAM MERE & SHAFTESBURY	105 SW	Zone: D					
105 D	2 2C	TROWBRIDGE WILTS	105 SW	Zone: D					
105 D	2 2C	WARMINSTER	105 SW	Zone: D					
105 D	2 2C	WESTBURY	105 SW	Zone: D	Zone: D	5	Zone: D	118	
105 D	2 2D	EASTLEIGH	105 SC	Zone: F					
105 D	2 2D	GUERNSEY	105 SC	Zone: F					
105 D	2 2D	JERSEY	105 SC	Zone: F					
105 D	2 2D	ROMSEY	105 SC	Zone: F					
105 D	2 2D	SALISBURY AND DISTRICT	105 SC	Zone: F	Zone: F	5	Zone: F	125	
105 D	2 2E	CHRISTCHURCH	105 SC	Zone: G					
105 D	2 2E	HYTHE AND WATERSIDE	105 SC	Zone: G					
105 D	2 2E	LYMINGTON AND BROCKENHURST	105 SC	Zone: G					
105 D	2 2E	NEW MILTON	105 SC	Zone: G					
105 D	2 2E	RINGWOOD FORDINGBRIDE	105 SC	Zone: G	Zone: G	5	Zone: G	84	
105 D	3 3F	CROFTON	105 SC	Zone: H					
105 D	3 3F	FAREHAM	105 SC	Zone: H					
105 D	3 3F	GOSPORT AND LEE ON SOLENT	105 SC	Zone: H					
105 D	3 3F	SOUTHAMPTON SOLENT	105 SC	Zone: H					
105 D	3 3F	SWANWICK	105 SC	Zone: H	Zone: H	5	Zone: H	56	
105 D	3 3G	ISLE OF WIGHT NEWPORT L C	105 SC	Zone: I					
105 D	3 3G	ISLE OF WIGHT RYDE	105 SC	Zone: I					
105 D	3 3G	ISLE OF WIGHT SANDOWN SHANKLIN	105 SC	Zone: I					
105 D	3 3G	ISLE OF WIGHT VENTNOR	105 SC	Zone: I	Zone: I	4	Zone: I	53	
105 D	3 3H	COSHAM	105 SC	Zone: J					
105 D	3 3H	HAVANT	105 SC	Zone: J					
105 D	3 3H	HAYLING ISLAND	105 SC	Zone: J					
105 D	3 3H	PORTSMOUTH	105 SC	Zone: J	Zone: J	4	Zone: J	77	
105 D	4 4I	ALTON	105 SC	Zone: K					
105 D	4 4I	MEON VALLEY L C	105 SC	Zone: K					
105 D	4 4I	PETERSFIELD	105 SC	Zone: K					
105 D	4 4I	WOOLMER FOREST L C	105 SC	Zone: K					
105 D	4 4J	BASINGSTOKE	105 SC	Zone: A					
105 D	4 4J	LODDON VALLEY	105 SC	Zone: A					
105 D	4 4J	NEWBURY	105 SC	Zone: A	Zone: A	3	Zone: A	72	
105 D	4 4J	ANDOVER	105 SC	Zone: K	Zone: K	5	Zone: K	107	
105 D	4 4K	FARNBOROUGH	105 SC	Zone: B					
105 D	4 4K	FLEET	105 SC	Zone: B					
105 D	4 4K	HART	105 SC	Zone: B					
105 D	4 4K	HOOK-ODIHAM	105 SC	Zone: B					
105 D	4 4K	YATELEY & DISTRICT L C	105 SC	Zone: B	Zone: B	5	Zone: B	126	
105 D	5 5L	BURNHAM BUCKS	105 SC	Zone: E					
105 D	5 5L	HENLEY ON THAMES	105 SC	Zone: E					
105 D	5 5L	MAIDENHEAD	105 SC	Zone: E					
105 D	5 5L	SLOUGH	105 SC	Zone: E					
105 D	5 5L	WINDSOR	105 SC	Zone: E	Zone: E	5	Zone: E	115	
105 D	5 5M	BRACKNELL	105 SC	Zone: D					
105 D	5 5M	READING	105 SC	Zone: D					
105 D	5 5M	WOKINGHAM BERKS	105 SC	Zone: D					

105 D	5 5M	WOODLEY & EARLEY L C	105 SC	Zone: D	Zone: D	4	Zone: D	111	1156
105 W	Zone: H	CALNE	105 SC	Zone: N					
105 W	Zone: H	CHIPPENHAM	105 SC	Zone: N					
105 W	Zone: H	DEVIZES	105 SC	Zone: N					
105 W	Zone: H	HIGHWORTH & DISTRICT	105 SC	Zone: N					
105 W	Zone: H	MARLBOROUGH & DISTRICT	105 SC	Zone: N					
105 W	Zone: H	MELKSHAM	105 SC	Zone: N					
105 W	Zone: H	SWINDON	105 SC	Zone: N	Zone: N	7	Zone: N	148	148
						68		1378	1378

Current		Proposed CE					
105 E	Zone A	BARTON ON HUMBER	105 CE Zone: O				
105 E	Zone A	BRIGG DISTRICT L C	105 CE Zone: O				
105 E	Zone A	CAISTOR & DIST	105 CE Zone: O				
105 E	Zone A	GRIMSBY CLEETHORPES	105 CE Zone: O				
105 E	Zone A	GRIMSBY NORTH EAST LINCS	105 CE Zone: O				
105 E	Zone A	HUMBERSTON NORTH SEA	105 CE Zone: O				
105 E	Zone A	MARKET RASEN	105 CE Zone: O	Zone: O	7	Zone: O	170
105 E	Zone B	GAINSBOROUGH	105 CE Zone: P				
105 E	Zone B	GLANFORD & LINDSEY L C	105 CE Zone: P				
105 E	Zone B	HYKEHAM	105 CE Zone: P				
105 E	Zone B	ISLE OF AXHOLME L C	105 CE Zone: P				
105 E	Zone B	LINCOLN	105 CE Zone: P				
105 E	Zone B	SCUNTHORPE	105 CE Zone: P				
105 E	Zone B	WINTERTON-NO LINCOLNSHIRE LC	105 CE Zone: P	Zone: P	7	Zone: P	184
105 E	Zone C	BOSTON	105 CE Zone: E				
105 E	Zone C	CONINGSBY & TATTERSHALL L C	105 CE Zone: E				
105 E	Zone C	HORNCASTLE & DISTRICT	105 CE Zone: E				
105 E	Zone C	LOUTH DISTRICT L C	105 CE Zone: E				
105 E	Zone C	MABLETHORPE SUTTON & DIST	105 CE Zone: E				
105 E	Zone C	SKEGNESS	105 CE Zone: E				
105 E	Zone C	WOODHALL SPA	105 CE Zone: E	Zone: E	7	Zone: E	118
105 E	Zone D	BOURNE	105 CE Zone: F				
105 E	Zone D	CROWLAND	105 CE Zone: F				
105 E	Zone D	EAST ELLOE L C	105 CE Zone: F				
105 E	Zone D	GRANTHAM	105 CE Zone: F				
105 E	Zone D	SLEAFORD & DISTRICT	105 CE Zone: F				
105 E	Zone D	SPALDING	105 CE Zone: F				
105 E	Zone D	STAMFORD & DISTRICT	105 CE Zone: F				
105 E	Zone D	THE DEEPINGS L C	105 CE Zone: F	Zone: F	8	Zone: F	113
105 E	Zone G	EDWINSTOWE & THE DUKERIES	105 CE Zone: I				
105 E	Zone G	NORTH NOTTS L C	105 CE Zone: I				
105 E	Zone G	RETFORD	105 CE Zone: I				
105 E	Zone G	SOUTHWELL & DISTRICT L C	105 CE Zone: I				
105 E	Zone G	WORKSOP	105 CE Zone: I	Zone: I	5	Zone: I	103
105 E	Zone H	NOTTINGHAM WEST	105 CE Zone: M				
105 E	Zone H	NOTTS/DERBY HEMLOCKSTONE L C	105 CE Zone: M				
105 E	Zone H	RADCLIFFE ON TRENT	105 CE Zone: M				
105 E	Zone H	VALE OF BELVOIR L C	105 CE Zone: M	Zone: M	4	Zone: M	79
105 EA	Region 4	BURY ST. EDMUNDS	105 CE Zone: C				767
105 EA	Region 4	EAST ANGLIA NEW CENTURY	105 CE Zone: C				
105 EA	Region 4	FELIXSTOWE	105 CE Zone: C				
105 EA	Region 4	IPSWICH	105 CE Zone: C				
105 EA	Region 4	STOWMARKET & DISTRICT L C	105 CE Zone: C				
105 EA	Region 4	WOODBIDGE & DISTRICT	105 CE Zone: C	Zone: C	6	Zone: C	158
105 EA	Region 1	DOWNHAM MARKET	105 CE Zone: L				
105 EA	Region 1	HUNSTANTON	105 CE Zone: L				
105 EA	Region 1	KING'S LYNN	105 CE Zone: L				
105 EA	Region 1	SWAFFHAM & DIST	105 CE Zone: L				
105 EA	Region 1	WELLS NEXT THE SEA	105 CE Zone: L	Zone: L	5	Zone: L	83
105 EA	Region 6	BECCLES	105 CE Zone: G				
105 EA	Region 6	BUNGAY AREA	105 CE Zone: G				
105 EA	Region 6	East Anglia	105 CE Zone: G				
105 EA	Region 6	HALESWORTH	105 CE Zone: G				
105 EA	Region 6	HARLESTON	105 CE Zone: G				
105 EA	Region 6	LOWESTOFT	105 CE Zone: G				
105 EA	Region 6	SOUTHWOLD SOLE BAY	105 CE Zone: G	Zone: G	7	Zone: G	217
105 EA	Region 3	ACLE & BRUNDALL	105 CE Zone: J				
105 EA	Region 3	GREAT YARMOUTH	105 CE Zone: J				
105 EA	Region 3	NORFOLK BROADS	105 CE Zone: J				
105 EA	Region 3	NORTH WALSHAM DISTRICT L C	105 CE Zone: J				
105 EA	Region 3	WROXHAM & HOVETON L C	105 CE Zone: J	Zone: J	5	Zone: J	82
105 EA	Region 5	BASILDON & WICKFORD	105 CE Zone: O				
105 EA	Region 5	BILLERICAY	105 CE Zone: O				
105 EA	Region 5	BRENTWOOD	105 CE Zone: O				
105 EA	Region 5	HARLOW	105 CE Zone: O				
105 EA	Region 5	ROMFORD	105 CE Zone: O				

105 EA	Region 5	Zone A	THURROCK	105 CE	Zone: O	Zone: O	10	Zone: O	170	
105 EA	Region 2	Zone A	CLACTON ON SEA	105 CE	Zone: Q					
105 EA	Region 2	Zone A	MALDON	105 CE	Zone: Q	Zone: Q	3	Zone: Q	66	
105 EA	Region 2	Zone A	MERSEA ISLAND	105 CE	Zone: Q					
105 EA	Region 1	Zone B	East Anglia Centennial 100	105 CE	Zone: A					
105 EA	Region 1	Zone B	HUNTINGDON GRAFHAM WATER	105 CE	Zone: A					
105 EA	Region 1	Zone B	MARCH	105 CE	Zone: A					
105 EA	Region 1	Zone B	PETERBOROUGH	105 CE	Zone: A					
105 EA	Region 1	Zone B	WHITTLESEY	105 CE	Zone: A					
105 EA	Region 1	Zone B	WISBECH	105 CE	Zone: A	Zone: A	6	Zone: A	151	
105 EA	Region 4	Zone B	CAMBRIDGE	105 CE	Zone: D					
105 EA	Region 4	Zone B	HAVERHILL	105 CE	Zone: D					
105 EA	Region 4	Zone B	LITTLEPORT	105 CE	Zone: D					
105 EA	Region 4	Zone B	NEWMARKET	105 CE	Zone: D					
105 EA	Region 4	Zone B	SAFFRON WALDEN	105 CE	Zone: D	Zone: D	5	Zone: D	70	
105 EA	Region 6	Zone B	Attleborough 2013	105 CE	Zone: H					
105 EA	Region 6	Zone B	HETHERSETT DISTRICT L C	105 CE	Zone: H					
105 EA	Region 6	Zone B	LONG STRATTON	105 CE	Zone: H					
105 EA	Region 6	Zone B	THETFORD BRECKLAND	105 CE	Zone: H					
105 EA	Region 6	Zone B	UEA Campus	105 CE	Zone: H					
105 EA	Region 6	Zone B	WYMONDHAM	105 CE	Zone: H	Zone: H	6	Zone: H	73	
105 EA	Region 3	Zone B	DEREHAM	105 CE	Zone: K					
105 EA	Region 3	Zone B	NORWICH CITY OF NORWICH	105 CE	Zone: K					
105 EA	Region 3	Zone B	NORWICH NORTH ALPHA	105 CE	Zone: K					
105 EA	Region 3	Zone B	NORWICH WEST	105 CE	Zone: K					
105 EA	Region 3	Zone B	Sheringham & Cromer	105 CE	Zone: K					
105 EA	Region 3	Zone B	TAVERHAM & DISTRICT L C	105 CE	Zone: K	Zone: K	6	Zone: K	72	
105 EA	Region 2	Zone B	BRAINTREE	105 CE	Zone: O					
105 EA	Region 2	Zone B	CHELMSFORD	105 CE	Zone: O					
105 EA	Region 2	Zone B	EAST ANGLIA HELEN KELLER INTERNET	105 CE	Zone: O					
105 EA	Region 2	Zone B	WITHAM & DISTRICT	105 CE	Zone: O					
105 EA	Region 5	Zone B	CASTLE POINT	105 CE	Zone: P					
105 EA	Region 5	Zone B	Eastwood	105 CE	Zone: P					
105 EA	Region 5	Zone B	LEIGH ON SEA	105 CE	Zone: P					
105 EA	Region 5	Zone B	RAYLEIGH	105 CE	Zone: P					
105 EA	Region 5	Zone B	SOUTHEND ON SEA	105 CE	Zone: P	Zone: P	5	Zone: P	111	1253
							102		2020	2020

Current			Proposed CW						
105 E		Zone I	BLABY & DISTRICT	105 CW	Zone: R				
105 E		Zone I	LEICESTER CHARNWOOD	105 CW	Zone: R				
105 E		Zone I	LEICESTER HOST	105 CW	Zone: R				
105 E		Zone I	MELTON MOWBRAY	105 CW	Zone: R				
105 E		Zone I	OADBY & WIGSTON	105 CW	Zone: R				
105 E		Zone I	RUTLAND	105 CW	Zone: R	Zone: R	150	Zone: R	6
105 M	Region 1	Zone: A	ALDRIDGE & DIST	105 CW	Zone: I				150
105 M	Region 1	Zone: A	BILSTON & WILLENHALL L C	105 CW	Zone: I				
105 M	Region 1	Zone: A	DUDLEY	105 CW	Zone: I				
105 M	Region 1	Zone: A	KINGSWINFORD-STOURBRIDGE	105 CW	Zone: I				
105 M	Region 1	Zone: A	WALSALL	105 CW	Zone: I				
105 M	Region 1	Zone: A	WOLVERHAMPTON	105 CW	Zone: I	Zone: I	65	Zone: I	6
105 M	Region 1	Zone: B	BIRMINGHAM ACOCKS GREEN	105 CW	Zone: Q				
105 M	Region 1	Zone: B	BIRMINGHAM CHINATOWN	105 CW	Zone: Q				
105 M	Region 1	Zone: B	BIRMINGHAM HANDSWORTH	105 CW	Zone: Q				
105 M	Region 1	Zone: B	BIRMINGHAM MOSELEY & KINGS HEATH	105 CW	Zone: Q				
105 M	Region 1	Zone: B	BIRMINGHAM SHELDON	105 CW	Zone: Q				
105 M	Region 1	Zone: B	SANDWELL	105 CW	Zone: Q				
105 M	Region 1	Zone: B	SUTTON COLDFIELD AND ERDINGTON	105 CW	Zone: Q	Zone: Q	141	Zone: Q	7
105 M	Region 1	Zone: C	BALSALL COMMON	105 CW	Zone: J				
105 M	Region 1	Zone: C	BIRMINGHAM EXHIBITION	105 CW	Zone: J				
105 M	Region 1	Zone: C	CASTLE BROMWICH & DIST	105 CW	Zone: J				
105 M	Region 1	Zone: C	KNOWLE & DORRIDGE	105 CW	Zone: J				
105 M	Region 1	Zone: C	MARSTON GREEN & DIST L C	105 CW	Zone: J				
105 M	Region 1	Zone: C	SHIRLEY	105 CW	Zone: J				
105 M	Region 1	Zone: C	SOLIHULL	105 CW	Zone: J	Zone: J	147	Zone: J	7
105 M	Region 2	Zone: D	KENILWORTH	105 CW	Zone: K				
105 M	Region 2	Zone: D	SHAKESPEARE L C	105 CW	Zone: K				
105 M	Region 2	Zone: D	SOUTHAM	105 CW	Zone: K				
105 M	Region 2	Zone: D	STOUR VALLEY	105 CW	Zone: K	Zone: K	179	Zone: K	6
105 M	Region 2	Zone: D	WARWICK	105 CW	Zone: K				
105 M	Region 2	Zone: D	WELLESBOURNE	105 CW	Zone: K				
105 M	Region 2	Zone: E	BROMSGROVE	105 CW	Zone: L				
105 M	Region 2	Zone: E	DROITWICH	105 CW	Zone: L				
105 M	Region 2	Zone: E	KIDDERMINSTER&DISTRICT	105 CW	Zone: L				
105 M	Region 2	Zone: E	MALVERN HILLS	105 CW	Zone: L				
105 M	Region 2	Zone: E	REDDITCH	105 CW	Zone: L				
105 M	Region 2	Zone: E	WORCESTER WORCS	105 CW	Zone: L	Zone: L	92	Zone: L	6
105 M	Region 2	Zone: F	BARWELL & EARL SHILTON	105 CW	Zone: M				
105 M	Region 2	Zone: F	BEDWORTH	105 CW	Zone: M				
105 M	Region 2	Zone: F	COVENTRY GODIVA	105 CW	Zone: M				
105 M	Region 2	Zone: F	COVENTRY LEOFRIC	105 CW	Zone: M				
105 M	Region 2	Zone: F	Coventry Mercia	105 CW	Zone: M				
105 M	Region 2	Zone: F	COVENTRY PHOENIX	105 CW	Zone: M				
105 M	Region 2	Zone: F	HINCKLEY BURBAGE	105 CW	Zone: M				
105 M	Region 2	Zone: F	NUNEATON	105 CW	Zone: M				
105 M	Region 3	Zone: G	NORTHAMPTON	105 CW	Zone: R				
105 M	Region 3	Zone: G	NORTHAMPTON EIGHTY	105 CW	Zone: R				
105 M	Region 3	Zone: G	RUSHDEN & DISTRICT	105 CW	Zone: R				
105 M	Region 3	Zone: G	TOWCESTER & DISTRICT	105 CW	Zone: R				
105 M	Region 3	Zone: G	WELLINGBOROUGH & DISTRICT	105 CW	Zone: R	Zone: R	67	Zone: R	5
105 M	Region 3	Zone: G	RUGBY ROKEBY L C	105 CW	Zone: M	Zone: M	173	Zone: M	9
105 M	Region 3	Zone: H	BUSHBY	105 CW	Zone: B				
105 M	Region 3	Zone: H	CORBY & DISTRICT	105 CW	Zone: B				
105 M	Region 3	Zone: H	HARBOROUGH TWENTY 12	105 CW	Zone: B				
105 M	Region 3	Zone: H	KETTERING & DISTRICT L C	105 CW	Zone: B				
105 M	Region 3	Zone: H	LUTTERWORTH	105 CW	Zone: B				
105 M	Region 3	Zone: H	ROWELL AND DESBOROUGH	105 CW	Zone: B				
105 M	Region 3	Zone: H	THURNBY	105 CW	Zone: B	Zone: B	109	Zone: B	7
105 W		Zone: A	ABERYSTWYTH	105 CW	Zone: C				973
105 W		Zone: A	FISHGUARD AND GOODWICK	105 CW	Zone: C				
105 W		Zone: A	HAVERFORDWEST	105 CW	Zone: C				
105 W		Zone: A	PEMBROKE & PEMBROKE DOCK L C	105 CW	Zone: C				

105 W	Zone: A	TENBY AND DISTRICT	105 CW	Zone: C	Zone: C	96	Zone: C	5	
105 W	Zone: B	AMMANFORD	105 CW	Zone: N					
105 W	Zone: B	CARMARTHEN	105 CW	Zone: N					
105 W	Zone: B	GLANTAWE SWANSEA VALLEY	105 CW	Zone: N					
105 W	Zone: B	GOWER & LLWCHWR ESTUARY	105 CW	Zone: N					
105 W	Zone: B	SWANSEA	105 CW	Zone: N	Zone: N	57	Zone: N	5	
105 W	Zone: C	ABERTILLERY	105 CW	Zone: O					
105 W	Zone: C	BRIDGEND	105 CW	Zone: O					
105 W	Zone: C	CAERFFILI	105 CW	Zone: O					
105 W	Zone: C	CARDIFF	105 CW	Zone: O					
105 W	Zone: C	LLANTWIT MAJOR AND COWBRIDGE	105 CW	Zone: O					
105 W	Zone: C	MAESTEG-TIR IARLL	105 CW	Zone: O					
105 W	Zone: C	PORTHCAWL	105 CW	Zone: O	Zone: O	137	Zone: O	7	
105 W	Zone: E	BLACK MOUNTAINS L C	105 CW	Zone: E					
105 W	Zone: E	BRECON	105 CW	Zone: E					
105 W	Zone: E	HEREFORD	105 CW	Zone: E					
105 W	Zone: E	KINGTON	105 CW	Zone: E					
105 W	Zone: E	LLANDRINDOD WELLS	105 CW	Zone: E	Zone: E	117	Zone: E	5	
105 W	Zone: F	CHEPSTOW AND CALDICOT	105 CW	Zone: F					
105 W	Zone: F	FOREST OF DEAN L C	105 CW	Zone: F					
105 W	Zone: F	MONMOUTH GWENT	105 CW	Zone: F					
105 W	Zone: F	NEWPORT	105 CW	Zone: F					
105 W	Zone: F	ROSS ON WYE	105 CW	Zone: F					
105 W	Zone: F	SEVERN DEAN L C	105 CW	Zone: F	Zone: F	100	Zone: F	6	
105 W	Zone: K	BRISTOL BRUNEL	105 CW	Zone: O					
105 W	Zone: K	CHIPPING SODBURY	105 CW	Zone: O					
105 W	Zone: K	DURSLEY	105 CW	Zone: O					
105 W	Zone: K	THORNBURY	105 CW	Zone: O					
105 W	Zone: K	WOTTON UNDER EDGE	105 CW	Zone: O	Zone: O	121	Zone: O	5	
105 W	Zone: G	CHELTENHAM	105 CW	Zone: L					
105 W	Zone: G	LECHLADE & DISTRICT	105 CW	Zone: L					
105 W	Zone: G	NORTHLEACH & FOSSE	105 CW	Zone: L					
105 W	Zone: G	TETBURY	105 CW	Zone: L	Zone: L	105	Zone: L	4	733
						1856		96	1856

Current				Proposed SE			
105 SE	REGION 1	ZONE 1A	BILLINGSHURST & DISTRICT	105 SE	Zone: A		
105 SE	REGION 1	ZONE 1A	BURGESS HILL DISTRICT	105 SE	Zone: A		
105 SE	REGION 1	ZONE 1A	CRAWLEY	105 SE	Zone: A		
105 SE	REGION 1	ZONE 1A	HAYWARDS HEATH	105 SE	Zone: A		
105 SE	REGION 1	ZONE 1A	HENFIELD & DIST	105 SE	Zone: A		
105 SE	REGION 1	ZONE 1A	HORSHAM	105 SE	Zone: A	Zone: A	6
105 SE	REGION 1	ZONE 1B	BOGNOR REGIS	105 SE	Zone: B		
105 SE	REGION 1	ZONE 1B	CHICHESTER	105 SE	Zone: B		
105 SE	REGION 1	ZONE 1B	MIDHURST	105 SE	Zone: B		
105 SE	REGION 1	ZONE 1B	SELSEY & DISTRICT	105 SE	Zone: B		
105 SE	REGION 1	ZONE 1B	SOUTHBOURNE WEST SUSSEX	105 SE	Zone: B	Zone: B	5
105 SE	REGION 3	ZONE3B	CANTERBURY	105 SE	Zone: C		
105 SE	REGION 3	ZONE3B	DEAL & WALMER	105 SE	Zone: C		
105 SE	REGION 3	ZONE3B	THANET L C	105 SE	Zone: C		
105 SE	REGION 3	ZONE3B	WHITSTABLE AND HERNE BAY	105 SE	Zone: C	Zone: C	4
105 SE	REGION 3	ZONE3C	DOVER DISTRICT L C	105 SE	Zone: D		
105 SE	REGION 3	ZONE3C	ELHAM VALLEY AND WYE	105 SE	Zone: D		
105 SE	REGION 3	ZONE3C	FOLKESTONE	105 SE	Zone: D		
105 SE	REGION 3	ZONE3C	HYTHE AND ROMNEY MARSH	105 SE	Zone: D		
105 SE	REGION 3	ZONE3C	TENTERDEN	105 SE	Zone: D	Zone: D	5
105 SE	REGION 4	ZONE 4A	BEXLEY SIDCUP	105 SE	Zone: E		
105 SE	REGION 4	ZONE 4A	DARENT VALLEY	105 SE	Zone: E		
105 SE	REGION 4	ZONE 4A	DARTFORD	105 SE	Zone: E		
105 SE	REGION 4	ZONE 4A	GRAVESEND DIST	105 SE	Zone: E		
105 SE	REGION 4	ZONE 4A	NORTHFLEET & EBBSFLEET	105 SE	Zone: E		
105 SE	REGION 4	ZONE 4A	SWANLEY & NORTH DOWNS	105 SE	Zone: E		
105 SE	REGION 4	ZONE 4A	WOOLWICH & GREENWICH L C	105 SE	Zone: E	Zone: E	7
105 SE	REGION 4	ZONE 4B	CRANLEIGH & DISTRICT	105 SE	Zone: F		
105 SE	REGION 4	ZONE 4B	FARNHAM	105 SE	Zone: F		
105 SE	REGION 4	ZONE 4B	GODALMING	105 SE	Zone: F		
105 SE	REGION 4	ZONE 4B	GUILDFORD	105 SE	Zone: F		
105 SE	REGION 4	ZONE 4B	LEATHERHEAD & DISTRICT L C	105 SE	Zone: F		
105 SE	REGION 4	ZONE 4B	SURREY BORDER L C	105 SE	Zone: F		
105 SE	REGION 4	ZONE 4B	WOKING	105 SE	Zone: F	Zone: F	7
105 SE	REGION 4	ZONE 4C	BROMLEY	105 SE	Zone: G		
105 SE	REGION 4	ZONE 4C	CATERHAM OXTED & GODSTONE L C	105 SE	Zone: G		
105 SE	REGION 4	ZONE 4C	CROYDON	105 SE	Zone: G		
105 SE	REGION 4	ZONE 4C	EAST GRINSTEAD	105 SE	Zone: G		
105 SE	REGION 4	ZONE 4C	HORLEY	105 SE	Zone: G	Zone: G	5
105 SE	REGION 1	ZONE 1C	CHANCTONBURY	105 SE	Zone: H		
105 SE	REGION 1	ZONE 1C	LANCING & SOMPTING	105 SE	Zone: H		
105 SE	REGION 1	ZONE 1C	LITTLEHAMPTON DISTRICT	105 SE	Zone: H		
105 SE	REGION 1	ZONE 1C	WORTHING	105 SE	Zone: H	Zone: H	4
105 SE	REGION 2	ZONE 2A	ADUR EAST	105 SE	Zone: I		
105 SE	REGION 2	ZONE 2A	BRIGHTON	105 SE	Zone: I		
105 SE	REGION 2	ZONE 2A	LEWES	105 SE	Zone: I		
105 SE	REGION 2	ZONE 2A	NEWHAVEN PEACEHAVEN & SEAFORD	105 SE	Zone: I		
105 SE	REGION 2	ZONE 2A	ROTTINGDEAN & SALTDEAN	105 SE	Zone: I	Zone: I	5
105 SE	REGION 2	ZONE 2B	BATTLE VILLAGES	105 SE	Zone: J		
105 SE	REGION 2	ZONE 2B	BEXHILL ON SEA	105 SE	Zone: J		
105 SE	REGION 2	ZONE 2B	EASTBOURNE	105 SE	Zone: J		
105 SE	REGION 2	ZONE 2B	HAILSHAM	105 SE	Zone: J		
105 SE	REGION 2	ZONE 2B	HASTINGS	105 SE	Zone: J		
105 SE	REGION 2	ZONE 2B	RYE & DISTRICT L C	105 SE	Zone: J		
105 SE	REGION 2	ZONE 2B	UCKFIELD DISTRICT	105 SE	Zone: J	Zone: J	7
105 SE	REGION 2	ZONE 2C	CROWBOROUGH & DISTRICT	105 SE	Zone: K		
105 SE	REGION 2	ZONE 2C	PADDOCK WOOD & DISTRICT	105 SE	Zone: K		

105 SE	REGION 2	ZONE 2C	SEVENOAKS
105 SE	REGION 2	ZONE 2C	SOUTHBOROUGH
105 SE	REGION 2	ZONE 2C	TONBRIDGE
105 SE	REGION 3	ZONE3A	GILLINGHAM
105 SE	REGION 3	ZONE3A	MAIDSTONE
105 SE	REGION 3	ZONE3A	MALLING DISTRICT L C
105 SE	REGION 3	ZONE3A	SWALE

105 SE	Zone: K				
105 SE	Zone: K				
105 SE	Zone: K	Zone: K	5	Zone: K	155
105 SE	Zone: L				
105 SE	Zone: L				
105 SE	Zone: L				
105 SE	Zone: L	Zone: L	4	Zone: L	94
			64		1564

	Current		Proposed SW				
105 D	1 1A	BLACKMORE VALE L C	105 SW	Zone: B			
105 D	1 1A	BRIDPORT	105 SW	Zone: B			
105 D	1 1A	DORCHESTER AND DISTRICT	105 SW	Zone: B			
105 D	1 1A	WEYMOUTH AND PORTLAND	105 SW	Zone: B	Zone: B	4	Zone: B 70
105 SW	Zone: A	CAMBORNE-REDRUTH & DISTRICT	105 SW	Zone: H			
105 SW	Zone: A	FALMOUTH & PENRYN	105 SW	Zone: H			
105 SW	Zone: A	HAYLE	105 SW	Zone: H			
105 SW	Zone: A	HELSTON	105 SW	Zone: H			
105 SW	Zone: A	PENZANCE	105 SW	Zone: H			
105 SW	Zone: A	TRURO	105 SW	Zone: H	Zone: H	6	Zone: H 100
105 SW	Zone: B	BODMIN	105 SW	Zone: I			
105 SW	Zone: B	FOWEY RIVER L C	105 SW	Zone: I			
105 SW	Zone: B	NEWQUAY	105 SW	Zone: I			
105 SW	Zone: B	NEWQUAY TOWAN BLYSTRA	105 SW	Zone: I			
105 SW	Zone: B	PADSTOW & DISTRICT L C	105 SW	Zone: I			
105 SW	Zone: B	ROCHE	105 SW	Zone: I			
105 SW	Zone: B	ST AUSTELL	105 SW	Zone: I			
105 SW	Zone: B	WADEBRIDGE	105 SW	Zone: I	Zone: I	8	Zone: I 174
105 SW	Zone: C	CALLINGTON	105 SW	Zone: J			
105 SW	Zone: C	LAUNCESTON	105 SW	Zone: J			
105 SW	Zone: C	LISKEARD	105 SW	Zone: J			
105 SW	Zone: C	LOOE	105 SW	Zone: J			
105 SW	Zone: C	SALTASH	105 SW	Zone: J			
105 SW	Zone: C	TORPOINT & RAME PENINSULA L C	105 SW	Zone: J	Zone J	6	156
105 SW	Zone: E	IVYBRIDGE	105 SW	Zone: K			
105 SW	Zone: E	PLYMOUTH	105 SW	Zone: K			
105 SW	Zone: E	PLYMOUTH TAMAR	105 SW	Zone: K			
105 SW	Zone: E	TAVISTOCK	105 SW	Zone: K	Zone: K	4	Zone: K 104
105 SW	Zone: F	BABBACOMBE & ST MARYCHURCH	105 SW	Zone: F			
105 SW	Zone: F	BRIXHAM	105 SW	Zone: F			
105 SW	Zone: F	PAIGNTON TORBAY	105 SW	Zone: F	Zone: F	3	Zone: F 46
105 SW	Zone: G	BARNSTAPLE	105 SW	Zone: G			
105 SW	Zone: G	BIDEFORD	105 SW	Zone: G			
105 SW	Zone: G	HOLSWORTHY	105 SW	Zone: G			
105 SW	Zone: G	ILFRACOMBE DEVON	105 SW	Zone: G			
105 SW	Zone: G	LYN L C	105 SW	Zone: G			
105 SW	Zone: G	SOUTH MOLTON	105 SW	Zone: G	Zone: G	6	Zone: G 90
105 SW	Zone: H	CREDITON & DISTRICT L C	105 SW	Zone: A			
105 SW	Zone: H	EXETER	105 SW	Zone: A			
105 SW	Zone: H	EXETER WEST	105 SW	Zone: A			
105 SW	Zone: H	OKEHAMPTON	105 SW	Zone: A			
105 SW	Zone: H	RIVENDELL PALACE CAMPUS	105 SW	Zone: A			
105 SW	Zone: H	TIVERTON	105 SW	Zone: A	Zone: A	6	Zone: A 100
105 SW	Zone: I	AXMINSTER DISTRICT L C	105 SW	Zone: E			
105 SW	Zone: I	BUDLEIGH SALTERTON	105 SW	Zone: E			
105 SW	Zone: I	HONITON & DISTRICT L C	105 SW	Zone: E			
105 SW	Zone: I	SEATON & DIST	105 SW	Zone: E			
105 SW	Zone: I	SIDMOUTH	105 SW	Zone: E	Zone: E	5	Zone: E 92
105 SW	Zone: J	CREWKERNE	105 SW	Zone: L			
105 SW	Zone: J	GLASTONBURY & STREET	105 SW	Zone: L			
105 SW	Zone: J	ILMINSTER	105 SW	Zone: L			
105 SW	Zone: J	WELLS SOMERSET	105 SW	Zone: L			
105 SW	Zone: J	YEOVIL	105 SW	Zone: L	Zone: L	5	Zone: L 117
105 SW	Zone: K	BURNHAM-ON-SEA & DISTRICT L C	105 SW	Zone: M			
105 SW	Zone: K	MINEHEAD & DISTRICT L C	105 SW	Zone: M	Zone: M	2	Zone: M 38
105 SW	Zone: L	CHEDDAR VALE L C	105 SW	Zone: N			
105 SW	Zone: L	CLEVEDON	105 SW	Zone: N			

